



Nibrin (Phospho-Ser278) Antibody

E11-1221A

Catalog Number: E11-1221A

Concentration: 1mg/ml

Swiss-Prot No.: O60934

Other Names: Cell cycle regulatory protein P95; NBN; NBS; NIBRIN; Nijmegen breakage syndrome 1 (nibrin); NIJMEGEN BREAKAGE syndrome protein 1; p95-NBS1

All Sites: Human: Ser278

Storage/Stability: Store at -20°C/1 year

Form of Antibody: Rabbit IgG in phosphate buffered saline (without Mg^{2+} and Ca^{2+}), pH 7.4, 150mM NaCl, 0.02% sodium azide and 50% glycerol.

Immunogen: The antiserum was produced against synthesized phosphopeptide derived from human Nibrin around the phosphorylation site of serine 278 (T-N-S^P-Q-T).

Purification: The antibody was affinity-purified from

rabbit antiserum by affinity-chromatography using epitope-specific phosphopeptide. The antibody against non-phosphopeptide was removed by chromatography using non-phosphopeptide corresponding to the phosphorylation site.

Specificity: Nibrin (Phospho-Ser278) antibody detects endogenous levels of Nibrin only when phosphorylated at serine 278.

Reactivity: Human (Identities = 100%, Positives = 100%);

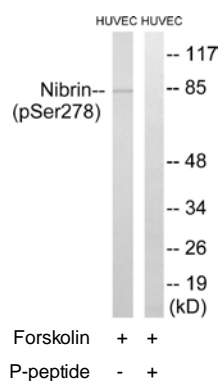
Applications: WB: 1:500~1:1000 IF: 1:100~1:500
ELISA: 1:1000

References:

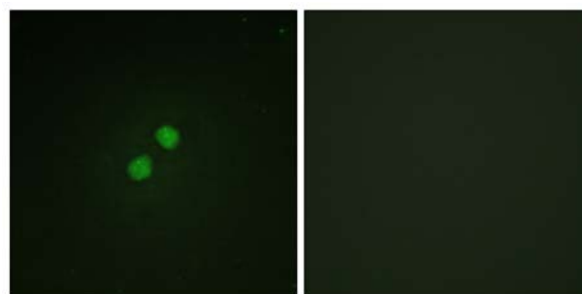
Varon R., Cell 93:467-476(1998).

Carney J.P., Cell 93:477-486(1998).

Matsuura S., Nat. Genet. 19:179-181(1998).

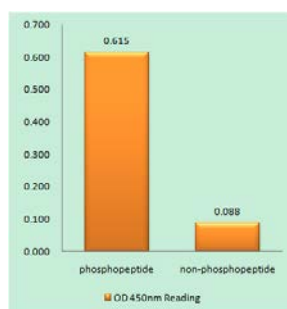


Western blot analysis of extracts from HUVEC cells, treated with Forskolin (40nM, 30mins), using Nibrin (Phospho-Ser278) antibody.



Immunofluorescence analysis of NIH/3T3 cells, using Nibrin (Phospho-Ser278) antibody.

For Research Use Only



Nibrin (Phospho-Ser278) antibody reacts with epitope-specific phosphopeptide and corresponding non-phosphopeptide. The absorbance readings at 450 nM are shown in the ELISA figure.