



COX15 Antibody

E11-12230C

Catalog Number: E11-12230 C

Concentration: 1mg/ml

Swiss-Prot No.: Q7KZN9

Other Names: Cytochrome c oxidase assembly protein
COX15 homolog,

Storage/Stability: Store at -20°C/1 year

Form of Antibody: Rabbit IgG in phosphate buffered
saline (without Mg^{2+} and Ca^{2+}), pH 7.4, 150mM NaCl,
0.02% sodium azide and 50% glycerol.

Immunogen: The antiserum was produced against
synthesized peptide derived from internal of human
COX15.

Purification: The antibody was affinity-purified from
rabbit antiserum by affinity-chromatography using

epitope-specific immunogen.

Specificity: COX15 antibody detects endogenous levels
of total COX15 protein.

Reactivity: Human (Identities = 100%, Positives =
100%); Mouse (Identities = 78%, Positives =
92%);
Rat (Identities = 78%, Positives = 92%)

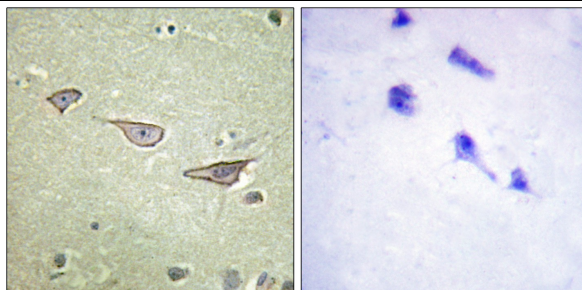
Applications: IHC: 1:50~1:100 ELISA: 1:1000

References:

Petruzzella V., Genomics 54:494-504(1998).

Antonicka H., Am. J. Hum. Genet. 72:101-114(2003).

Deloukas P., Nature 429:375-381(2004).



Peptide - +

Immunohistochemistry analysis of paraffin-embedded
human brain tissue using COX15 antibody.

For Research Use Only