



RBBP8 Antibody

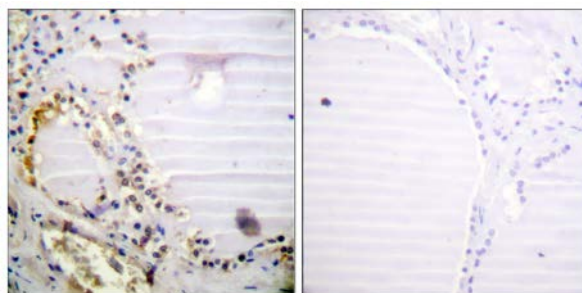
E11-1231B

Catalog Number: E11-1231B**Concentration:** 1mg/ml**Swiss-Prot No.:** Q99708**Other Names:** CtBP interacting protein, CtIP, RBBP-8, RBBP8, RIM, Retinoblastoma-binding protein 8, Retinoblastoma-interacting protein and myosin-like**Storage/Stability:** Store at -20°C/1 year**Form of Antibody:** Rabbit IgG in phosphate buffered saline (without Mg^{2+} and Ca^{2+}), pH 7.4, 150mM NaCl, 0.02% sodium azide and 50% glycerol.**Immunogen:** The antiserum was produced against synthesized peptide derived from Internal of human RBBP8.**Purification:** The antibody was affinity-purified from rabbit antiserum by affinity-chromatography using epitope-specific immunogen.**Specificity:** RBBP8 antibody detects endogenous levels of total RBBP8 protein.**Reactivity:** Human (Identities = 100%, Positives = 100%);
Mouse (Identities = 100%, Positives = 100%)**Applications:** IHC: 1:50~1:100 ELISA: 1:5000**References:**

Schaeper U., J. Biol. Chem. 273:8549-8552(1998).

Fusco C., Genomics 51:351-358(1998).

Yu X., J. Biol. Chem. 275:18541-18549(2000).



Peptide

-

+

Immunohistochemistry analysis of paraffin-embedded human thyroid gland tissue using RBBP8 antibody.

For Research Use Only