



## IBP7 Antibody

E11-12449C

**Catalog Number:** E11-12449 C

**Concentration:** 1mg/ml

**Swiss-Prot No.:** Q16270

**Other Names:** Insulin-like growth factor-binding protein 7 [Precursor], IGFBP-7, IBP-7, IGF-binding protein 7, MAC25 protein, Prostacyclin-stimulating factor, PGI2-stimulating factor, IGFBP-rP1, IGFBP7, MAC25, PSF

**Storage/Stability:** Store at -20°C/1 year

**Form of Antibody:** Rabbit IgG in phosphate buffered saline (without  $Mg^{2+}$  and  $Ca^{2+}$ ), pH 7.4, 150mM NaCl, 0.02% sodium azide and 50% glycerol.

**Immunogen:** The antiserum was produced against synthesized peptide derived from internal of human IBP7.

**Purification:** The antibody was affinity-purified from rabbit antiserum by affinity-chromatography using epitope-specific immunogen.

**Specificity:** IBP7 antibody detects endogenous levels of total IBP7 protein.

**Reactivity:** Human (Identities = 100%, Positives = 100%);

Mouse (Identities = 100%, Positives = 100%);

Rat (Identities = 100%, Positives = 100%)

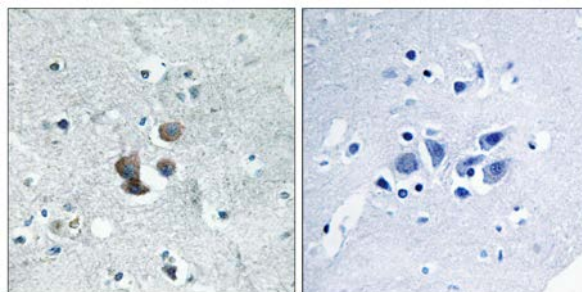
**Applications:** IHC: 1:50~1:100 ELISA: 1:40000

**References:**

Murphy M., Cell Growth Differ. 4:715-722(1993).

Yamauchi T., Biochem. J. 303:591-598(1994).

Oh Y., J. Biol. Chem. 271:30322-30325(1996).



Peptide

-

+

Immunohistochemistry analysis of paraffin-embedded human brain tissue using IBP7 antibody.

**For Research Use Only**