



## APC8 Antibody

E11-12818C

**Catalog Number:** E11-12818 C

**Concentration:** 1mg/ml

**Swiss-Prot No.:** Q9UJX2

**Other Names:** APC8, Anaphase promoting complex subunit 8, CC23, Cell division cycle protein 23 homolog, Cyclosome subunit 8

**Storage/Stability:** Store at -20°C/1 year

**Form of Antibody:** Rabbit IgG in phosphate buffered saline (without  $Mg^{2+}$  and  $Ca^{2+}$ ), pH 7.4, 150mM NaCl, 0.02% sodium azide and 50% glycerol.

**Immunogen:** The antiserum was produced against synthesized peptide derived from internal of human APC8.

**Purification:** The antibody was affinity-purified from

rabbit antiserum by affinity-chromatography using epitope-specific immunogen.

**Specificity:** APC8 antibody detects endogenous levels of total APC8 protein.

**Reactivity:** Human (Identities = 100%, Positives = 100%);  
Mouse (Identities = 100%, Positives = 100%)

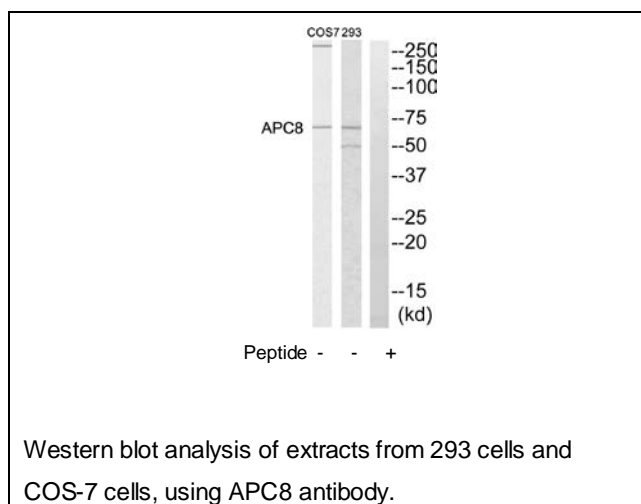
**Applications:** WB: 1:500~1:1000 ELISA: 1:20000

**References:**

Oyamatsu T., Submitted (FEB-1998) to the EMBL/GenBank/DDBJ databases.

Ota T., Nat. Genet. 36:40-45(2004).

Suzuki Y., Submitted (APR-2005) to the EMBL/GenBank/DDBJ databases.



**For Research Use Only**