



HER2 Antibody

E11-12903C

Catalog Number: E11-12903 C**Concentration:** 1mg/ml**Swiss-Prot No.:** P04626**Other Names:** C-erbB-2, EC 2.7.10.1, Epidermal growth factor receptor-related protein, ErbB2, HER2, MLN 19, NEU, NEU proto-oncogene, NGL, Receptor protein-tyrosine kinase erbB-2, Receptor protein-tyrosine kinase erbB-2 precursor, Tyrosine kinase-type cell surface receptor HER2, kinase ErbB2, p185erbB2**Storage/Stability:** Store at -20°C/1 year**Form of Antibody:** Rabbit IgG in phosphate buffered saline (without Mg^{2+} and Ca^{2+}), pH 7.4, 150mM NaCl, 0.02% sodium azide and 50% glycerol.**Immunogen:** The antiserum was produced against

synthesized peptide derived from internal of human HER2.

Purification: The antibody was affinity-purified from rabbit antiserum by affinity-chromatography using epitope-specific immunogen.**Specificity:** HER2 antibody detects endogenous levels of total HER2 protein.**Reactivity:** Human, Mouse, Rat**Applications:** WB: 1:500~1:1000 IHC: 1:50~1:100

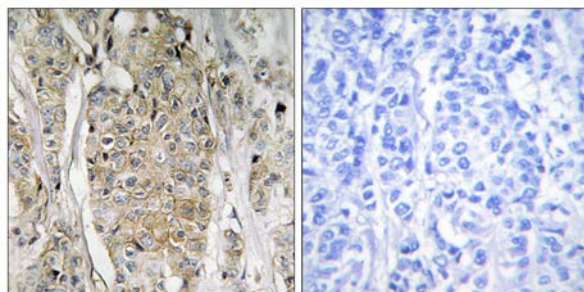
IF: 1:100~1:500 ELISA: 1:20000

References:

King C.R., Science 229:974-976(1985).

Sarkar F.H., DNA Cell Biol. 12:611-615(1993).

Swiercz J.M., J. Cell Biol. 165:869-880(2004).

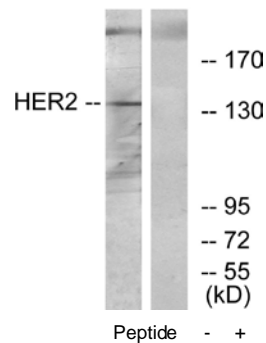


Peptide

-

+

Immunohistochemistry analysis of paraffin-embedded human breast carcinoma tissue using HER2 antibody.



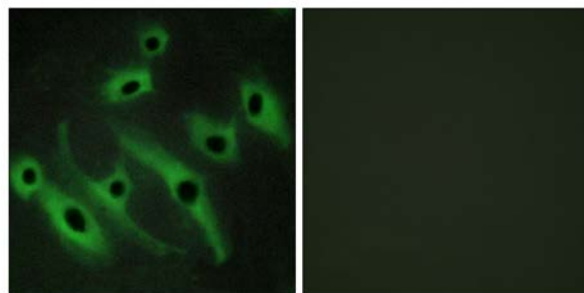
Peptide

-

+

Western blot analysis of extracts from 293 cells, using HER2 antibody.

For Research Use Only



Peptide

-

+

Immunofluorescence analysis of HeLa cells, using HER2 antibody.