



DCC Antibody

E11-13040C

Catalog Number: E11-13040 C

Concentration: 1mg/ml

Swiss-Prot No.: P43146

Other Names: colorectal cancer suppressor, deleted in colorectal carcinoma, netrin receptor DCC, tumor suppressor protein DCC

Storage/Stability: Store at -20°C/1 year

Form of Antibody: Rabbit IgG in phosphate buffered saline (without Mg^{2+} and Ca^{2+}), pH 7.4, 150mM NaCl, 0.02% sodium azide and 50% glycerol.

Immunogen: The antiserum was produced against synthesized peptide derived from internal of human DCC.

Purification: The antibody was affinity-purified from

rabbit antiserum by affinity-chromatography using epitope-specific immunogen.

Specificity: DCC antibody detects endogenous levels of total DCC protein.

Reactivity: Human (Identities = 100%, Positives = 100%);

Mouse (Identities = 100%, Positives = 100%);

Rat (Identities = 100%, Positives = 100%)

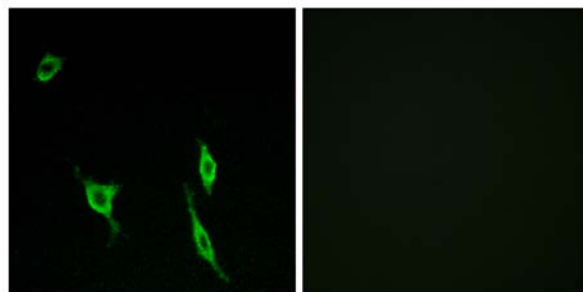
Applications: IF: 1:100~1:500 ELISA: 1:20000

References:

Hedrick L., Genes Dev. 8:1174-1183(1994).

Cho K.R., Genomics 19:525-531(1994).

Sjoeblohm T., Science 314:268-274(2006).



Peptide

-

+

Immunofluorescence analysis of LOVO cells, using DCC antibody.

For Research Use Only