



LEG2 Antibody

E11-13076C

Catalog Number: E11-13076 C

Concentration: 1mg/ml

Swiss-Prot No.: P05162

Other Names: Galectin-2, Beta-galactoside-binding lectin L-14-II, Lactose-binding lectin 2, S-Lac lectin 2, HL14, LGALS2

Storage/Stability: Store at -20°C/1 year

Form of Antibody: Rabbit IgG in phosphate buffered saline (without Mg^{2+} and Ca^{2+}), pH 7.4, 150mM NaCl, 0.02% sodium azide and 50% glycerol.

Immunogen: The antiserum was produced against synthesized peptide derived from internal of human LEG2.

Purification: The antibody was affinity-purified from

rabbit antiserum by affinity-chromatography using epitope-specific immunogen.

Specificity: LEG2 antibody detects endogenous levels of total LEG2 protein.

Reactivity: Human (Identities = 100%, Positives = 100%);

Mouse (Identities = 81%, Positives = 100%);

Rat (Identities = 80%, Positives = 93%)

Applications: IHC: 1:50~1:100 IF: 1:100~1:500

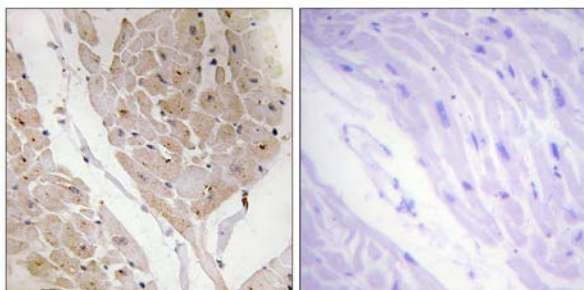
ELISA: 1:1000

References:

Gitt M.A., J. Biol. Chem. 267:10601-10606(1992).

Collins J.E., Genome Biol. 5:RESEARCH84.1-RESEARCH84.11(2004).

Dunham I., Nature 402:489-495(1999).

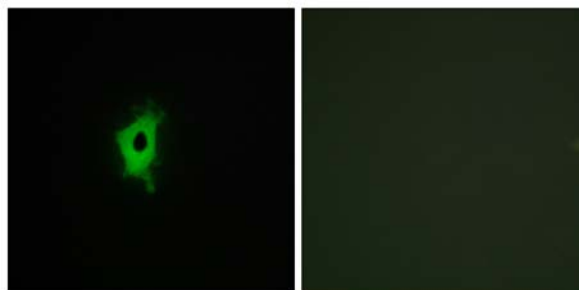


Peptide

-

+

Immunohistochemistry analysis of paraffin-embedded human heart tissue using LEG2 antibody.



Peptide

-

+

Immunofluorescence analysis of COS-7 cells, using LEG2 antibody.

For Research Use Only