



MLH3 Antibody

E11-13087C

Catalog Number: E11-13087 C

Concentration: 1mg/ml

Swiss-Prot No.: Q9UHC1

Other Names: DNA mismatch repair protein Mlh3, MutL protein homolog 3

Storage/Stability: Store at -20°C/1 year

Form of Antibody: Rabbit IgG in phosphate buffered saline (without Mg^{2+} and Ca^{2+}), pH 7.4, 150mM NaCl, 0.02% sodium azide and 50% glycerol.

Immunogen: The antiserum was produced against synthesized peptide derived from internal of human MLH3.

Purification: The antibody was affinity-purified from rabbit antiserum by affinity-chromatography using epitope-specific immunogen.

Specificity: MLH3 antibody detects endogenous levels of total MLH3 protein.

Reactivity: Human

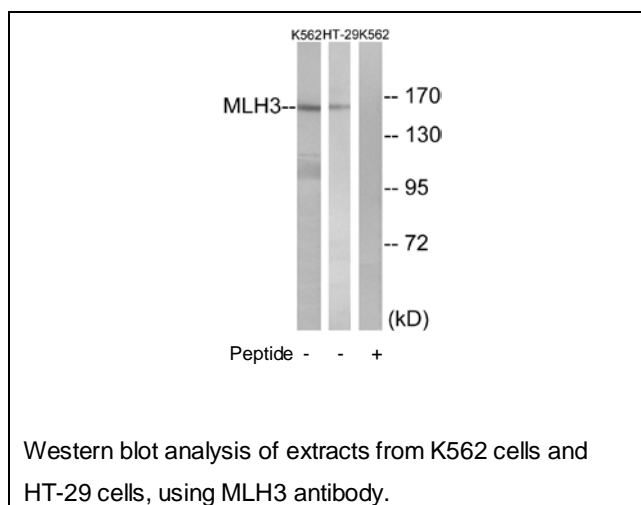
Applications: WB: 1:500~1:1000 ELISA: 1:40000

References:

Lipkin S.M., Nat. Genet. 24:27-35(2000).

Kondo E., Nucleic Acids Res. 29:1695-1702(2001).

Lipkin S.M., Hum. Mutat. 17:389-396(2001).



For Research Use Only