



PMS1 Antibody

E11-13103C

Catalog Number: E11-13103 C

Concentration: 1mg/ml

Swiss-Prot No.: P54277

Other Names: DNA mismatch repair protein PMS1, PMSL1

Storage/Stability: Store at -20°C/1 year

Form of Antibody: Rabbit IgG in phosphate buffered saline (without Mg^{2+} and Ca^{2+}), pH 7.4, 150mM NaCl, 0.02% sodium azide and 50% glycerol.

Immunogen: The antiserum was produced against synthesized peptide derived from internal of human PMS1.

Purification: The antibody was affinity-purified from rabbit antiserum by affinity-chromatography using epitope-specific immunogen.

Specificity: PMS1 antibody detects endogenous levels of total PMS1 protein.

Reactivity: Human (Identities = 100%, Positives = 100%)

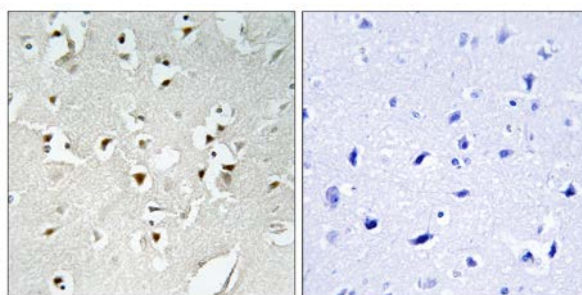
Applications: IHC: 1:50~1:100 ELISA: 1:10000

References:

Nicolaides N.C., Nature 371:75-80(1994).

Rieder M.J., Submitted (APR-2003) to the EMBL/GenBank/DDBJ databases.

Wang Q., Hum. Genet. 105:79-85(1999).



Peptide - +

Immunohistochemistry analysis of paraffin-embedded human brain tissue using PMS1 antibody.

For Research Use Only