



MRPS24 Antibody

E11-14040C

Catalog Number: E11-14040 C

Concentration: 1mg/ml

Swiss-Prot No.: Q96EL2

Other Names: 28S ribosomal protein S24, mitochondrial; S24mt; MRP-S24; bMRP47; bMRP-47

Storage/Stability: Store at -20°C/1 year

Form of Antibody: Rabbit IgG in phosphate buffered saline (without Mg^{2+} and Ca^{2+}), pH 7.4, 150mM NaCl, 0.02% sodium azide and 50% glycerol.

Immunogen: The antiserum was produced against synthesized peptide derived from internal of human MRPS24.

Purification: The antibody was affinity-purified from

rabbit antiserum by affinity-chromatography using epitope-specific immunogen.

Specificity: MRPS24 antibody detects endogenous levels of total MRPS24 protein.

Reactivity: Human (Identities = 100%, Positives = 100%);

Mouse (Identities = 94%, Positives = 100%);

Rat (Identities = 94%, Positives = 100%)

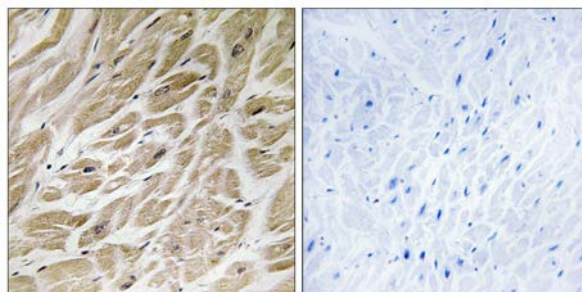
Applications: IHC: 1:50~1:100 ELISA: 1:40000

References:

Kenmochi N., Genomics 77:65-70(2001).

Koc E.C., J. Biol. Chem. 275:32585-32591(2000).

Suzuki T., J. Biol. Chem. 276:33181-33195(2001).



Peptide

-

+

Immunohistochemistry analysis of paraffin-embedded human heart tissue using MRPS24 antibody.

For Research Use Only