



## MRPL21 Antibody

E11-14066C

**Catalog Number:** E11-14066 C

**Concentration:** 1mg/ml

**Swiss-Prot No.:** Q7Z2W9

**Other Names:** 39S ribosomal protein L21, mitochondrial; L21mt; RP-L21

**Storage/Stability:** Store at -20°C/1 year

**Form of Antibody:** Rabbit IgG in phosphate buffered saline (without  $Mg^{2+}$  and  $Ca^{2+}$ ), pH 7.4, 150mM NaCl, 0.02% sodium azide and 50% glycerol.

**Immunogen:** The antiserum was produced against synthesized peptide derived from internal of human MRPL21.

**Purification:** The antibody was affinity-purified from

rabbit antiserum by affinity-chromatography using epitope-specific immunogen.

**Specificity:** MRPL21 antibody detects endogenous levels of total MRPL21 protein.

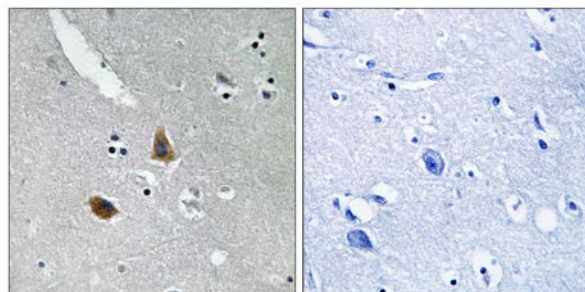
**Reactivity:** Human (Identities = 100%, Positives = 100%);  
Mouse (Identities = 82%, Positives = 94%)

**Applications:** WB: 1:500~1:1000 IHC: 1:50~1:100  
ELISA: 1:40000

**References:**

The MGC Project Team; Genome Res. 14:2121-2127(2004).

Colinge J., Submitted (OCT-2008) to UniProtKB.

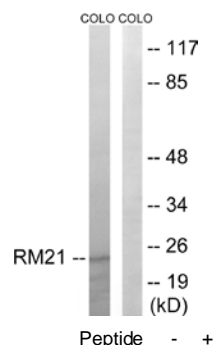


Peptide

-

+

Immunohistochemistry analysis of paraffin-embedded human brain tissue using MRPL21 antibody.



Western blot analysis of extracts from COLO cells, using MRPL21 antibody.

**For Research Use Only**