



RPS12 Antibody

E11-14095C**Catalog Number:** E11-14095 C**Concentration:** 1mg/ml**Swiss-Prot No.:** P25398**Other Names:** 40S ribosomal protein S12; RS12**Storage/Stability:** Store at -20°C/1 year**Form of Antibody:** Rabbit IgG in phosphate buffered saline (without Mg^{2+} and Ca^{2+}), pH 7.4, 150mM NaCl, 0.02% sodium azide and 50% glycerol.**Immunogen:** The antiserum was produced against synthesized peptide derived from C-terminal of human RPS12.**Purification:** The antibody was affinity-purified from

rabbit antiserum by affinity-chromatography using epitope-specific immunogen.

Specificity: RPS12 antibody detects endogenous levels of total RPS12 protein.**Reactivity:** Human, Mouse, Rat**Applications:** WB: 1:500~1:1000 IF: 1:100~1:500

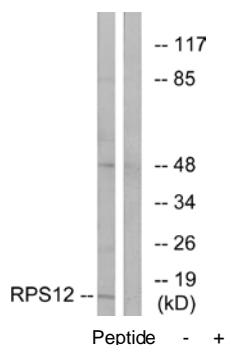
ELISA: 1:40000

References:

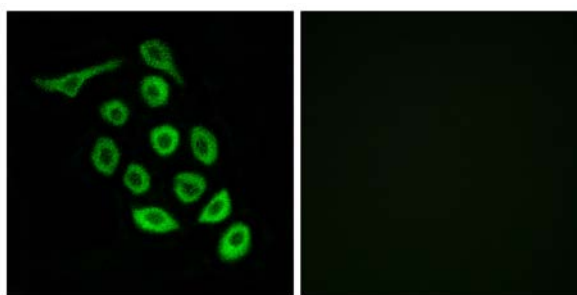
Herault Y., Nucleic Acids Res. 19:4001-4001(1991).

Bienvenut W.V., Submitted (FEB-2008) to UniProtKB.

Vladimirov S.N., Eur. J. Biochem. 239:144-149(1996).



Western blot analysis of extracts from COLO cells, using RPS12 antibody.



Immunofluorescence analysis of A549 cells, using RPS12 antibody.

For Research Use Only