



## RPS2 Antibody

E11-14105C

**Catalog Number:** E11-14105 C

**Concentration:** 1mg/ml

**Swiss-Prot No.:** P15880

**Other Names:** 40S ribosomal protein S2; LLREP3; LLRep3 protein; OK/KNS-cl.6; ribosomal protein S2; RPS4; RS2; S4

**Storage/Stability:** Store at -20°C/1 year

**Form of Antibody:** Rabbit IgG in phosphate buffered saline (without Mg<sup>2+</sup> and Ca<sup>2+</sup>), pH 7.4, 150mM NaCl, 0.02% sodium azide and 50% glycerol.

**Immunogen:** The antiserum was produced against synthesized peptide derived from C-terminal of human RPS2.

**Purification:** The antibody was affinity-purified from rabbit antiserum by affinity-chromatography using

epitope-specific immunogen.

**Specificity:** RPS2 antibody detects endogenous levels of total RPS2 protein.

**Reactivity:** Human (Identities = 100%, Positives = 100%);  
Mouse (Identities = 100%, Positives = 100%);  
Rat (Identities = 100%, Positives = 100%)

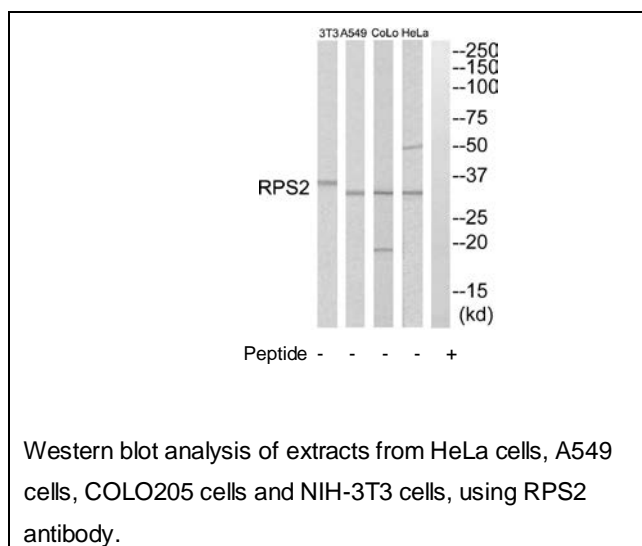
**Applications:** WB: 1:500~1:1000 ELISA: 1:20000

**References:**

Slynn G., Nucleic Acids Res. 18:681-681(1990).

Ota T., Nat. Genet. 36:40-45(2004).

Mural R.J., Submitted (SEP-2005) to the EMBL/GenBank/DDBJ databases.



**For Research Use Only**