



## RPS21 Antibody

E11-14107C

**Catalog Number:** E11-14107 C

**Concentration:** 1mg/ml

**Swiss-Prot No.:** P63220

**Other Names:** 40S ribosomal protein S21

**Storage/Stability:** Store at -20°C/1 year

**Form of Antibody:** Rabbit IgG in phosphate buffered saline (without  $Mg^{2+}$  and  $Ca^{2+}$ ), pH 7.4, 150mM NaCl, 0.02% sodium azide and 50% glycerol.

**Immunogen:** The antiserum was produced against synthesized peptide derived from internal of human RPS21.

**Purification:** The antibody was affinity-purified from

rabbit antiserum by affinity-chromatography using epitope-specific immunogen.

**Specificity:** RPS21 antibody detects endogenous levels of total RPS21 protein.

**Reactivity:** Human (Identities = 100%, Positives = 100%);

Mouse (Identities = 100%, Positives = 100%);

Rat (Identities = 100%, Positives = 100%)

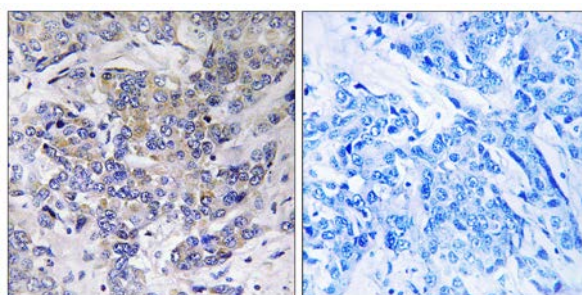
**Applications:** IHC: 1:50~1:100 ELISA: 1:10000

**References:**

Yoshihama M., Genome Res. 12:379-390(2002).

Deloukas P., Nature 414:865-871(2001).

Kenmochi N., Genome Res. 8:509-523(1998).



Peptide - +

Immunohistochemistry analysis of paraffin-embedded human breast carcinoma tissue using RPS21 antibody.

**For Research Use Only**