



RPS3 Antibody

E11-14118C

Catalog Number: E11-14118 C

Concentration: 1mg/ml

Swiss-Prot No.: P23396

Other Names: 40S ribosomal protein S3; RS3

Storage/Stability: Store at -20°C/1 year

Form of Antibody: Rabbit IgG in phosphate buffered saline (without Mg^{2+} and Ca^{2+}), pH 7.4, 150mM NaCl, 0.02% sodium azide and 50% glycerol.

Immunogen: The antiserum was produced against synthesized peptide derived from internal of human RPS3.

Purification: The antibody was affinity-purified from rabbit antiserum by affinity-chromatography using epitope-specific immunogen.

Specificity: RPS3 antibody detects endogenous levels of total RPS3 protein.

Reactivity: Human (Identities = 100%, Positives = 100%);
Mouse (Identities = 100%, Positives = 100%);
Rat (Identities = 100%, Positives = 100%)

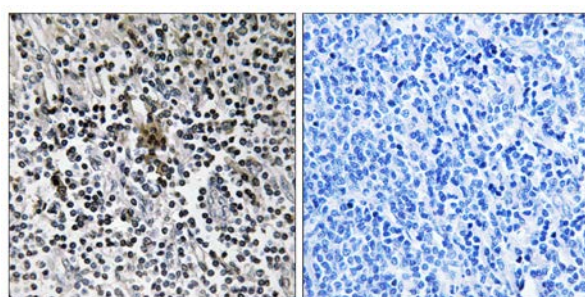
Applications: WB: 1:500~1:1000 IHC: 1:50~1:100
ELISA: 1:40000

References:

Yoshihama M., Genome Res. 12:379-390(2002).

Nousiainen M., Proc. Natl. Acad. Sci. U.S.A. 103:5391-5396(2006).

Molina H., Proc. Natl. Acad. Sci. U.S.A. 104:2199-2204(2007).

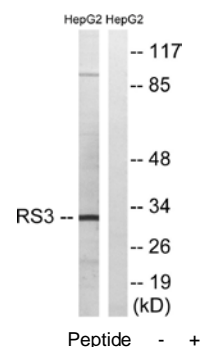


Peptide

-

+

Immunohistochemistry analysis of paraffin-embedded human tonsil tissue using RPS3 antibody.



Western blot analysis of extracts from HepG2 cells, using RPS3 antibody.