



## RPS8 Antibody

E11-14126C

**Catalog Number:** E11-14126 C

**Concentration:** 1mg/ml

**Swiss-Prot No.:** P62241

**Other Names:** 40S ribosomal protein S8; OK/SW-cl.83;  
ribosomal protein S8; RS8

**Storage/Stability:** Store at -20°C/1 year

**Form of Antibody:** Rabbit IgG in phosphate buffered  
saline (without  $Mg^{2+}$  and  $Ca^{2+}$ ), pH 7.4, 150mM NaCl,  
0.02% sodium azide and 50% glycerol.

**Immunogen:** The antiserum was produced against  
synthesized peptide derived from internal of human  
RPS8.

**Purification:** The antibody was affinity-purified from

rabbit antiserum by affinity-chromatography using  
epitope-specific immunogen.

**Specificity:** RPS8 antibody detects endogenous levels of  
total RPS8 protein.

**Reactivity:** Human, Mouse, Rat

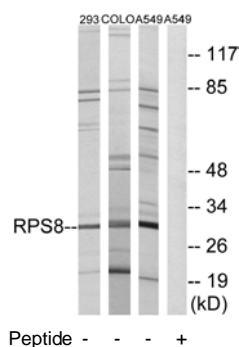
**Applications:** WB: 1:500~1:1000 ELISA: 1:20000

**References:**

Davies B., Genomics 15:68-75(1993).

Shichijo S., Submitted (MAY-2001) to the  
EMBL/GenBank/DDBJ databases.

The MGC Project Team; Genome Res.  
14:2121-2127(2004).



**For Research Use Only**