



## RPL30 Antibody

**E11-14169C****Catalog Number:** E11-14169C**Concentration:** 1mg/ml**Swiss-Prot No.:** P62888**Other Names:** 60S ribosomal protein L30; RL30**Storage/Stability:** Store at -20 °C/1 year**Form of Antibody:** Rabbit IgG in phosphate buffered saline (without Mg<sup>2+</sup> and Ca<sup>2+</sup>), pH 7.4, 150mM NaCl, 0.02% sodium azide and 50% glycerol.**Immunogen:** The antiserum was produced against synthesized peptide derived from internal of human RPL30.**Purification:** The antibody was affinity-purified from rabbit antiserum by affinity-chromatography using

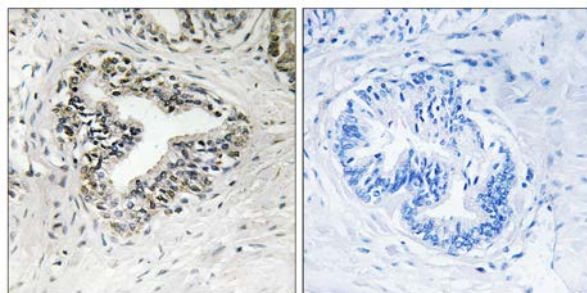
epitope-specific immunogen.

**Specificity:** RPL30 antibody detects endogenous levels of total RPL30 protein.**Reactivity:** Human (Identities = 100%, Positives = 100%);  
Mouse (Identities = 100%, Positives = 100%);  
Rat (Identities = 100%, Positives = 100%)**Applications:** WB: 1:500~1:1000 IHC: 1:50~1:100  
ELISA: 1:40000**References:**

Beausoleil S.A., Nat. Biotechnol. 24:1285-1292(2006).

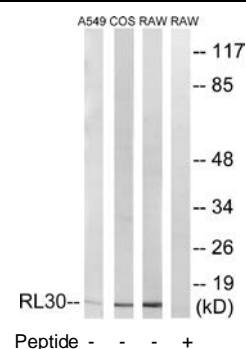
Yoshihama M., Genome Res. 12:379-390(2002).

The MGC Project Team; Genome Res. 14:2121-2127(2004).



Peptide - +

Immunohistochemistry analysis of paraffin-embedded human prostate carcinoma tissue using RPL30 antibody.



Western blot analysis of extracts from A549 cells, COS-7 cells and RAW264.7 cells, using RPL30 antibody.

**For Research Use Only**