



RPL37 Antibody

E11-14178C

Catalog Number: E11-14178 C

Concentration: 1mg/ml

Swiss-Prot No.: P61927

Other Names: 60S ribosomal protein L37; G1.16

Storage/Stability: Store at -20°C/1 year

Form of Antibody: Rabbit IgG in phosphate buffered saline (without Mg^{2+} and Ca^{2+}), pH 7.4, 150mM NaCl, 0.02% sodium azide and 50% glycerol.

Immunogen: The antiserum was produced against synthesized peptide derived from internal of human RPL37.

Purification: The antibody was affinity-purified from

rabbit antiserum by affinity-chromatography using epitope-specific immunogen.

Specificity: RPL37 antibody detects endogenous levels of total RPL37 protein.

Reactivity: Human (Identities = 100%, Positives = 100%);

Mouse (Identities = 100%, Positives = 100%);

Rat (Identities = 100%, Positives = 100%)

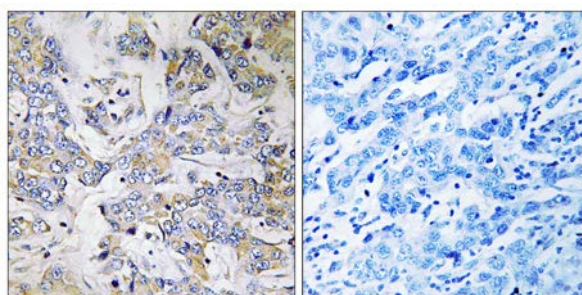
Applications: IHC: 1:50~1:100 ELISA: 1:10000

References:

Yoshihama M., Genome Res. 12:379-390(2002).

Kenmochi N., Genome Res. 8:509-523(1998).

Su S., Eur. J. Biochem. 232:789-797(1995).



Peptide

-

+

Immunohistochemistry analysis of paraffin-embedded human breast carcinoma tissue using RPL37 antibody.

For Research Use Only