



## RPL5 Antibody

E11-14187C

**Catalog Number:** 14187 C

**Concentration:** 1mg/ml

**Swiss-Prot No.:** P46777

**Other Names:** 60S ribosomal protein L5; RL5

**Storage/Stability:** Store at -20°C/1 year

**Form of Antibody:** Rabbit IgG in phosphate buffered saline (without  $Mg^{2+}$  and  $Ca^{2+}$ ), pH 7.4, 150mM NaCl, 0.02% sodium azide and 50% glycerol.

**Immunogen:** The antiserum was produced against synthesized peptide derived from internal of human RPL5.

**Purification:** The antibody was affinity-purified from

rabbit antiserum by affinity-chromatography using epitope-specific immunogen.

**Specificity:** RPL5 antibody detects endogenous levels of total RPL5 protein.

**Reactivity:** Human, Mouse, Rat

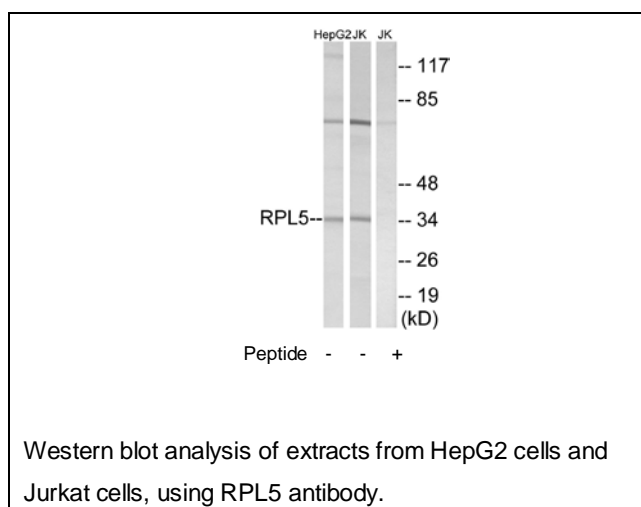
**Applications:** WB: 1:500~1:1000 ELISA: 1:20000

**References:**

Frigerio J.-M., Biochim. Biophys. Acta 1262:64-68(1995).

Gregory S.G., Nature 441:315-321(2006).

Odintsova T.I., J. Protein Chem. 22:249-258(2003).



**For Research Use Only**