



CHRNA1 Antibody

E11-14225C

Catalog Number: E11-14225 C

Concentration: 1mg/ml

Swiss-Prot No.: P11230

Other Names: Acetylcholine receptor subunit beta

Storage/Stability: Store at -20°C/1 year

Form of Antibody: Rabbit IgG in phosphate buffered saline (without Mg²⁺ and Ca²⁺), pH 7.4, 150mM NaCl, 0.02% sodium azide and 50% glycerol.

Immunogen: The antiserum was produced against synthesized peptide derived from N-terminal of human CHRNA1.

Purification: The antibody was affinity-purified from

rabbit antiserum by affinity-chromatography using epitope-specific immunogen.

Specificity: CHRNA1 antibody detects endogenous levels of total CHRNA1 protein.

Reactivity: Human (Identities = 100%, Positives = 100%);

Mouse (Identities = 100%, Positives = 100%);

Rat (Identities = 100%, Positives = 100%)

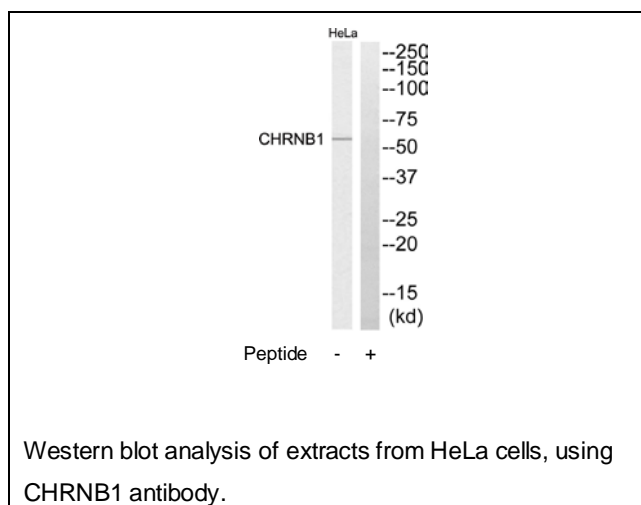
Applications: WB: 1:500~1:1000 ELISA: 1:5000

References:

Beeson D.M.W., Nucleic Acids Res. 17:4391-4391(1989).

Gomez C.M., Ann. Neurol. 39:712-723(1996).

Engel A.G., Hum. Mol. Genet. 5:1217-1227(1996).



For Research Use Only