



## AMPH Antibody

**E11-14446C**

**Catalog Number:** E11-14446 C

**Concentration:** 1mg/ml

**Swiss-Prot No.:** P49418

**Other Names:** AMPH; AMPH1

**Storage/Stability:** Store at -20°C/1 year

**Form of Antibody:** Rabbit IgG in phosphate buffered saline (without  $Mg^{2+}$  and  $Ca^{2+}$ ), pH 7.4, 150mM NaCl, 0.02% sodium azide and 50% glycerol.

**Immunogen:** The antiserum was produced against synthesized peptide derived from internal of human AMPH.

**Purification:** The antibody was affinity-purified from

rabbit antiserum by affinity-chromatography using epitope-specific immunogen.

**Specificity:** AMPH antibody detects endogenous levels of total AMPH protein.

**Reactivity:** Human (Identities = 100%, Positives = 100%);

Mouse (Identities = 100%, Positives = 100%);

Rat (Identities = 100%, Positives = 100%)

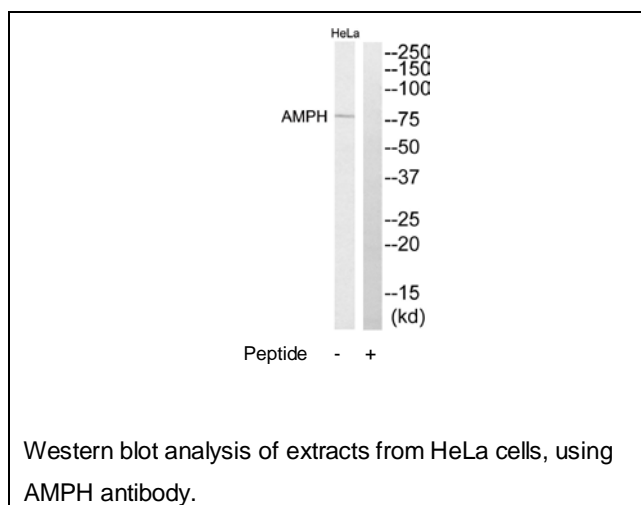
**Applications:** WB: 1:500~1:1000 ELISA: 1:20000

**References:**

David C., FEBS Lett. 351:73-79(1994).

Yamamoto R., Hum. Mol. Genet. 4:265-268(1995).

Floyd S.R., Mol. Med. 4:29-39(1998).



**For Research Use Only**