



APBA2 Antibody

E11-14449C

Catalog Number: E11-14449 C

Concentration: 1mg/ml

Swiss-Prot No.: Q99767

Other Names: Amyloid beta A4 precursor protein-binding family A member 2; Neuron-specific X11L protein; Neuronal Munc18-1-interacting protein 2; Mint-2; Adapter protein X11beta

Storage/Stability: Store at -20°C/1 year

Form of Antibody: Rabbit IgG in phosphate buffered saline (without Mg^{2+} and Ca^{2+}), pH 7.4, 150mM NaCl, 0.02% sodium azide and 50% glycerol.

Immunogen: The antiserum was produced against synthesized peptide derived from internal of human APBA2.

Purification: The antibody was affinity-purified from rabbit antiserum by affinity-chromatography using epitope-specific immunogen.

Specificity: APBA2 antibody detects endogenous levels of total APBA2 protein.

Reactivity: Human (Identities = 100%, Positives = 100%);
Mouse (Identities = 100%, Positives = 100%);
Rat (Identities = 100%, Positives = 100%)

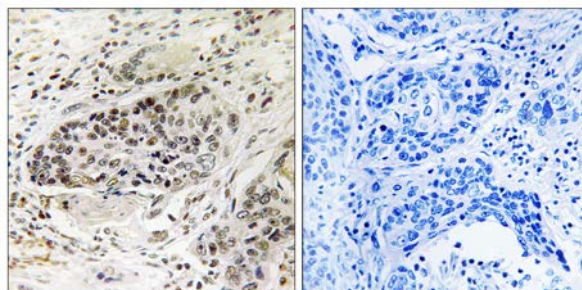
Applications: IHC: 1:50~1:100 ELISA: 1:5000

References:

Tomita S., J. Biol. Chem. 274:2243-2254(1999).

Okamoto M., J. Biol. Chem. 272:31459-31464(1997).

Lee D.-S., J. Biol. Chem. 275:23134-23138(2000).



Peptide

-

+

Immunohistochemistry analysis of paraffin-embedded human lung carcinoma tissue using APBA2 antibody.

For Research Use Only