



## APBA3 Antibody

E11-14450C

**Catalog Number:** E11-14450 C

**Concentration:** 1mg/ml

**Swiss-Prot No.:** O96018

**Other Names:** Adapter protein X11gamma; Amyloid beta A4 precursor protein-binding family A member 3; Mint-3; MINT3; Neuron-specific X11L2 protein; Neuronal Munc18-1-interacting protein 3; X11L2

**Storage/Stability:** Store at -20°C/1 year

**Form of Antibody:** Rabbit IgG in phosphate buffered saline (without  $Mg^{2+}$  and  $Ca^{2+}$ ), pH 7.4, 150mM NaCl, 0.02% sodium azide and 50% glycerol.

**Immunogen:** The antiserum was produced against synthesized peptide derived from internal of human

APBA3.

**Purification:** The antibody was affinity-purified from rabbit antiserum by affinity-chromatography using epitope-specific immunogen.

**Specificity:** APBA3 antibody detects endogenous levels of total APBA3 protein.

**Reactivity:** Human (Identities = 100%, Positives = 100%)

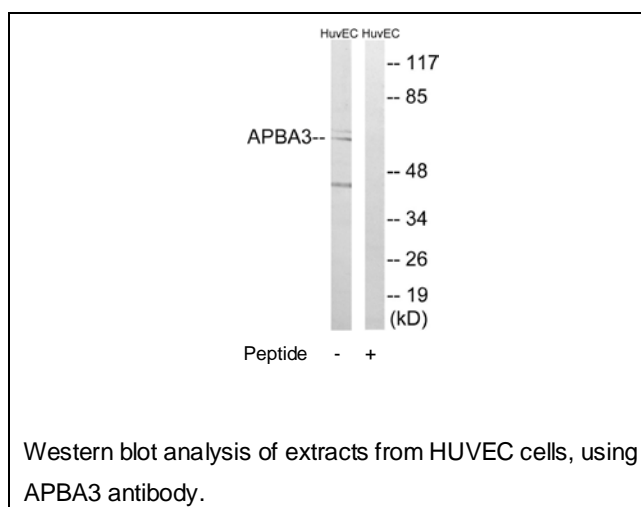
**Applications:** WB: 1:500~1:1000 ELISA: 1:40000

**References:**

Grimwood J., Nature 428:529-535(2004).

Tanahashi H., Biochem. Biophys. Res. Commun. 255:663-667(1999).

Okamoto M., Eur. J. Cell Biol. 77:161-165(1998).



**For Research Use Only**