



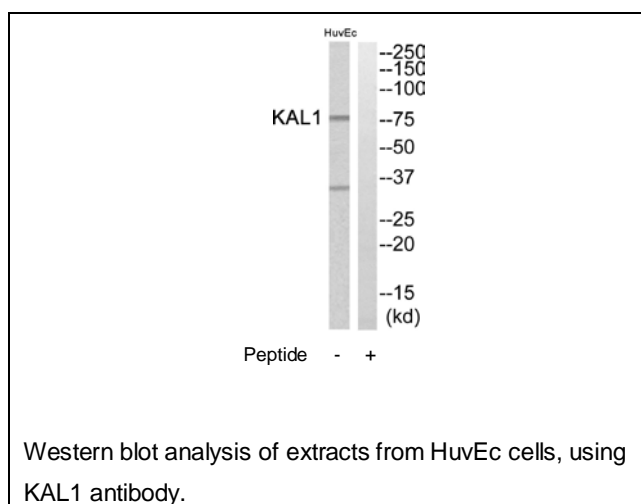
## KAL1 Antibody

**E11-14510C****Catalog Number:** E11-14510C**Concentration:** 1mg/ml**Swiss-Prot No.:** P23352**Other Names:** adhesion molecule-like X-linked; ADMLX; anosmin-1; HHA; KAL; KALIG-1; KALIG1; Kallmann syndrome 1; KALM; KMS**Storage/Stability:** Store at -20 °C/1 year**Form of Antibody:** Rabbit IgG in phosphate buffered saline (without  $Mg^{2+}$  and  $Ca^{2+}$ ), pH 7.4, 150mM NaCl, 0.02% sodium azide and 50% glycerol.**Immunogen:** The antiserum was produced against synthesized peptide derived from internal of human KAL1.**Purification:** The antibody was affinity-purified from rabbit antiserum by affinity-chromatography using epitope-specific immunogen.**Specificity:** KAL1 antibody detects endogenous levels of total KAL1 protein.**Reactivity:** Human (Identities = 100%, Positives = 100%)**Applications:** WB: 1:500~1:1000 ELISA: 1:10000**References:**

Legouis R., Cell 67:423-435(1991).

del Castillo I., Nat. Genet. 2:305-310(1992).

Franco B., Nature 353:529-536(1991).

**For Research Use Only**