



## ARG1 Antibody

E11-14559C

**Catalog Number:** E11-14559 C

**Concentration:** 1mg/ml

**Swiss-Prot No.:** P05089

**Other Names:** AI; AI256583; Arg-1; ARG11; arginase 1, liver; arginase I; PGIF

**Storage/Stability:** Store at -20°C/1 year

**Form of Antibody:** Rabbit IgG in phosphate buffered saline (without  $Mg^{2+}$  and  $Ca^{2+}$ ), pH 7.4, 150mM NaCl, 0.02% sodium azide and 50% glycerol.

**Immunogen:** The antiserum was produced against synthesized peptide derived from internal of human ARG1.

**Purification:** The antibody was affinity-purified from rabbit antiserum by affinity-chromatography using epitope-specific immunogen.

**Specificity:** ARG1 antibody detects endogenous levels of total ARG1 protein.

**Reactivity:** Human (Identities = 100%, Positives = 100%)

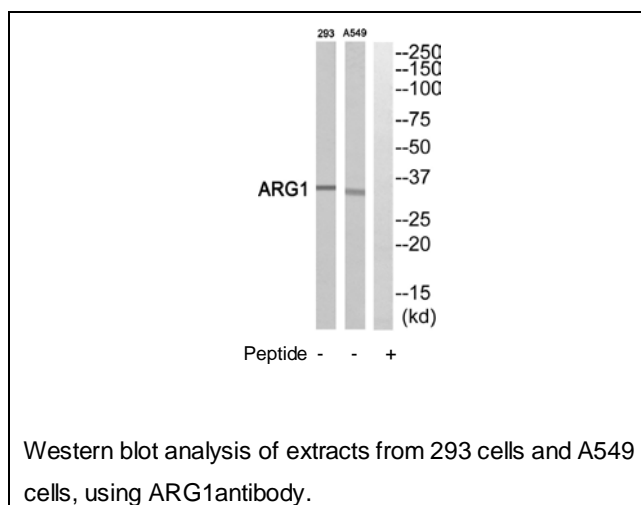
**Applications:** WB: 1:500~1:1000 ELISA: 1:10000

**References:**

Haraguchi Y., Proc. Natl. Acad. Sci. U.S.A. 84:412-415(1987).

Takiguchi M., Nucleic Acids Res. 16:8789-8802(1988).

Mungall A.J., Nature 425:805-811(2003).



**For Research Use Only**