



ARSA Antibody

E11-14564C

Catalog Number: E11-14564 C**Concentration:** 1mg/ml**Swiss-Prot No.:** P15289**Other Names:** arylsulfatase A; ASA;
cerebroside-sulfatase; EC 3.1.6.8; MLD**Storage/Stability:** Store at -20°C/1 year**Form of Antibody:** Rabbit IgG in phosphate buffered saline (without Mg^{2+} and Ca^{2+}), pH 7.4, 150mM NaCl, 0.02% sodium azide and 50% glycerol.**Immunogen:** The antiserum was produced against synthesized peptide derived from internal of human ARSA.**Purification:** The antibody was affinity-purified from

rabbit antiserum by affinity-chromatography using epitope-specific immunogen.

Specificity: ARSA antibody detects endogenous levels of total ARSA protein.**Reactivity:** Human, Mouse, Rat**Applications:** WB: 1:500~1:1000 IHC: 1:50~1:100

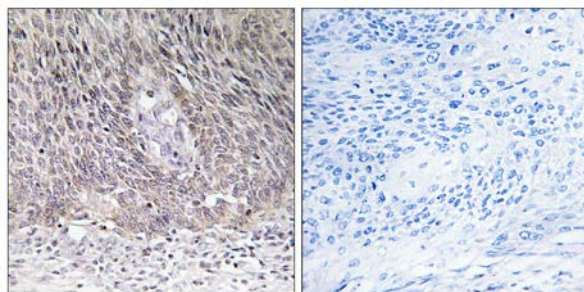
ELISA: 1:20000

References:

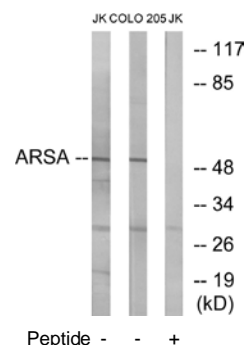
Stein C., J. Biol. Chem. 264:1252-1259(1989).

Kreysing J., Eur. J. Biochem. 191:627-631(1990).

Collins J.E., Genome Biol. 5:RESEARCH84.1-RESEARCH84.11(2004).



Immunohistochemistry analysis of paraffin-embedded human cervix carcinoma tissue using ARSA antibody.



Western blot analysis of extracts from Jurkat cells and COLO cells, using ARSA antibody.