



## ARSK Antibody

E11-14573C

**Catalog Number:** E11-14573 C

**Concentration:** 1mg/ml

**Swiss-Prot No.:** Q6UWY0

**Other Names:** Arylsulfatase K; EC 3.1.6.-; ASK; Telethon sulfatase

**Storage/Stability:** Store at -20°C/1 year

**Form of Antibody:** Rabbit IgG in phosphate buffered saline (without Mg<sup>2+</sup> and Ca<sup>2+</sup>), pH 7.4, 150mM NaCl, 0.02% sodium azide and 50% glycerol.

**Immunogen:** The antiserum was produced against synthesized peptide derived from C-terminal of human ARSK.

**Purification:** The antibody was affinity-purified from

rabbit antiserum by affinity-chromatography using epitope-specific immunogen.

**Specificity:** ARSK antibody detects endogenous levels of total ARSK protein.

**Reactivity:** Human (Identities = 100%, Positives = 100%);

Mouse (Identities = 94%, Positives = 100%);

Rat (Identities = 88%, Positives = 100%)

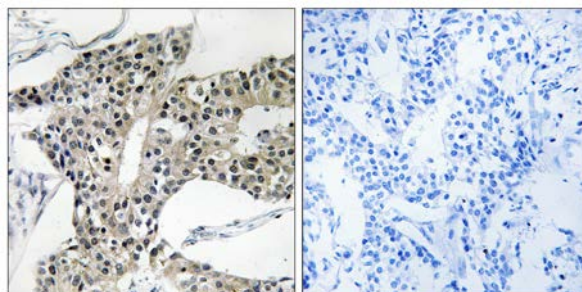
**Applications:** IHC: 1:50~1:100 ELISA: 1:20000

**References:**

Sardiello M., Hum. Mol. Genet. 14:3203-3217(2005).

Clark H.F., Genome Res. 13:2265-2270(2003).

The MGC Project Team; Genome Res. 14:2121-2127(2004).



Peptide

-

+

Immunohistochemistry analysis of paraffin-embedded human breast carcinoma tissue using ARSK antibody.

**For Research Use Only**