



## C9orf89 Antibody

E11-14695C

**Catalog Number:** E11-14695 C

**Concentration:** 1mg/ml

**Swiss-Prot No.:** Q96LW7

**Other Names:** Bcl10-interacting CARD protein;  
Bcl10-interacting protein with CARD; BINCA; BinCARD

**Storage/Stability:** Store at -20°C/1 year

**Form of Antibody:** Rabbit IgG in phosphate buffered saline (without  $Mg^{2+}$  and  $Ca^{2+}$ ), pH 7.4, 150mM NaCl, 0.02% sodium azide and 50% glycerol.

**Immunogen:** The antiserum was produced against synthesized peptide derived from internal of human C9orf89.

**Purification:** The antibody was affinity-purified from rabbit antiserum by affinity-chromatography using epitope-specific immunogen.

**Specificity:** C9orf89 antibody detects endogenous levels of total C9orf89 protein.

**Reactivity:** Human (Identities = 100%, Positives = 100%);  
Mouse (Identities = 100%, Positives = 100%)

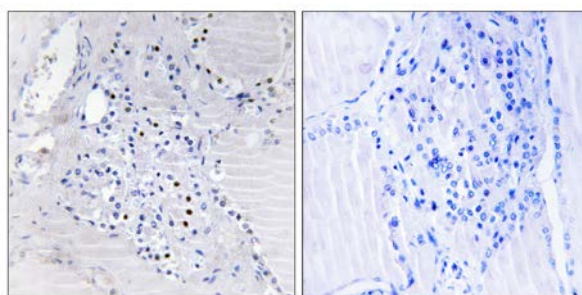
**Applications:** IHC: 1:50~1:100 ELISA: 1:40000

**References:**

Humphray S.J., Nature 429:369-374(2004).

Woo H.-N., FEBS Lett. 578:239-244(2004).

Matsuoka S., Science 316:1160-1166(2007).



Peptide - +

Immunohistochemistry analysis of paraffin-embedded human thyroid gland tissue using C9orf89 antibody.

**For Research Use Only**