



## SLC27A5 Antibody

E11-14745C

**Catalog Number:** E11-14745 C

**Concentration:** 1mg/ml

**Swiss-Prot No.:** Q9Y2P5

**Other Names:** EC 6.2.1.7; FACVL3; FATP5; MGC143799; S27A5; solute carrier family 27 (fatty acid transporter), member 5; Vlacsr; VLCS-H2; VLCSH2

**Storage/Stability:** Store at -20°C/1 year

**Form of Antibody:** Rabbit IgG in phosphate buffered saline (without Mg<sup>2+</sup> and Ca<sup>2+</sup>), pH 7.4, 150mM NaCl, 0.02% sodium azide and 50% glycerol.

**Immunogen:** The antiserum was produced against synthesized peptide derived from internal of human SLC27A5.

**Purification:** The antibody was affinity-purified from rabbit antiserum by affinity-chromatography using epitope-specific immunogen.

**Specificity:** SLC27A5 antibody detects endogenous levels of total SLC27A5 protein.

**Reactivity:** Human

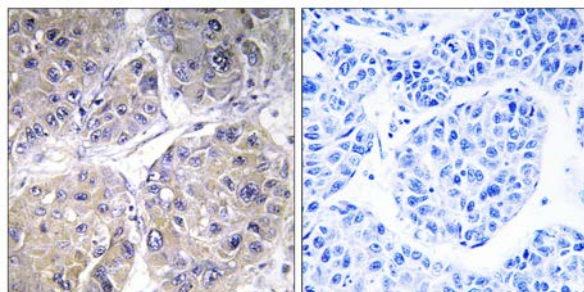
**Applications:** WB: 1:500~1:1000 IHC: 1:50~1:100  
IF: 1:100~1:500 ELISA: 1:40000

**References:**

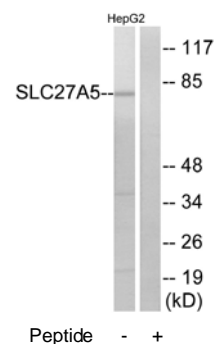
Steinberg S.J., Mol. Genet. Metab. 68:32-42(1999).

Steinberg S.J., J. Biol. Chem. 275:15605-15608(2000).

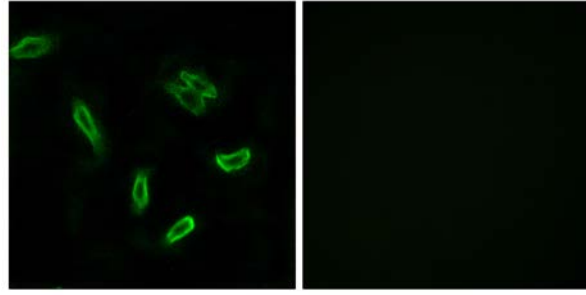
Mihalik S.J., J. Biol. Chem. 277:24771-24779(2002).



Immunohistochemistry analysis of paraffin-embedded human liver carcinoma tissue using SLC27A5 antibody.



Western blot analysis of extracts from HepG2 cells, using SLC27A5 antibody.



Peptide                      -                      +

Immunofluorescence analysis of A549 cells, using SLC27A5 antibody.