



CMC1 Antibody

E11-14841C

Catalog Number: E11-14841 C

Concentration: 1mg/ml

Swiss-Prot No.: O75746

Other Names: Calcium-binding mitochondrial carrier protein Aralar1; Mitochondrial aspartate glutamate carrier 1; Solute carrier family 25 member 12

Storage/Stability: Store at -20°C/1 year

Form of Antibody: Rabbit IgG in phosphate buffered saline (without Mg^{2+} and Ca^{2+}), pH 7.4, 150mM NaCl, 0.02% sodium azide and 50% glycerol.

Immunogen: The antiserum was produced against synthesized peptide derived from internal of human CMC1.

Purification: The antibody was affinity-purified from rabbit antiserum by affinity-chromatography using epitope-specific immunogen.

Specificity: CMC1 antibody detects endogenous levels of total CMC1 protein.

Reactivity: Human (Identities = 100%, Positives = 100%);
Mouse (Identities = 84%, Positives = 100%)

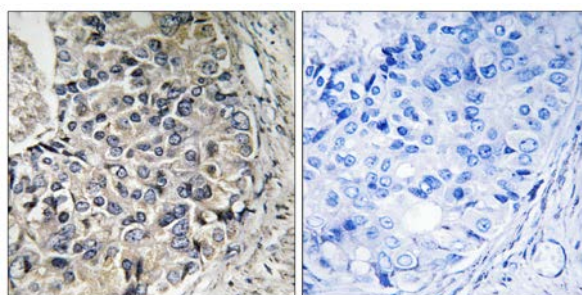
Applications: IHC: 1:50~1:100 ELISA: 1:5000

References:

Del Arco A., J. Biol. Chem. 273:23327-23334(1998).

Kobayashi K., Nat. Genet. 22:159-163(1999).

Palmieri L., EMBO J. 20:5060-5069(2001).



Peptide

-

+

Immunohistochemistry analysis of paraffin-embedded human prostate carcinoma tissue using CMC1 antibody.

For Research Use Only