



## CPE Antibody

E11-14961C

**Catalog Number:** E11-14961 C

**Concentration:** 1mg/ml

**Swiss-Prot No.:** P16870

**Other Names:** carboxypeptidase e; carboxypeptidase e preproprotein; cbpe; cpe

**Storage/Stability:** Store at -20°C/1 year

**Form of Antibody:** Rabbit IgG in phosphate buffered saline (without  $Mg^{2+}$  and  $Ca^{2+}$ ), pH 7.4, 150mM NaCl, 0.02% sodium azide and 50% glycerol.

**Immunogen:** The antiserum was produced against synthesized peptide derived from internal of human CPE.

**Purification:** The antibody was affinity-purified from

rabbit antiserum by affinity-chromatography using epitope-specific immunogen.

**Specificity:** CPE antibody detects endogenous levels of total CPE protein.

**Reactivity:** Human (Identities = 100%, Positives = 100%)

Mouse (Identities = 100%, Positives = 100%);

Rat (Identities = 100%, Positives = 100%)

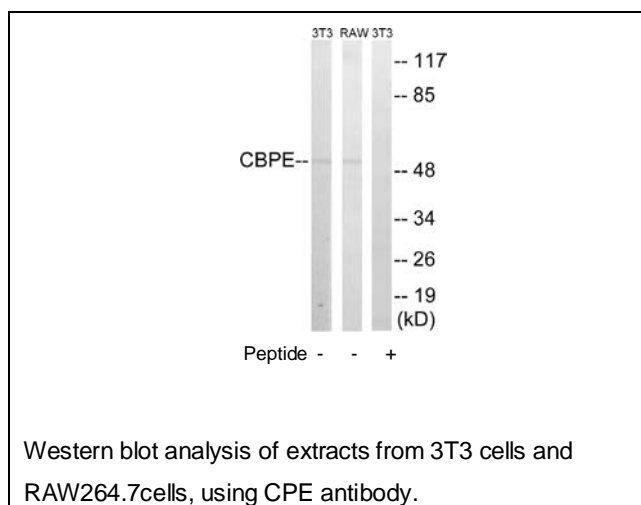
**Applications:** WB: 1:500~1:1000 ELISA: 1:5000

**References:**

Manser E., Biochem. J. 267:517-525(1990).

Utsunomiya N., Diabetologia 41:701-705(1998).

Sjoebloom T., Science 314:268-274(2006).



**For Research Use Only**