



CEP110 Antibody

E11-15037C

Catalog Number: E11-15037 C

Concentration: 1mg/ml

Swiss-Prot No.: O43303

Other Names: CENTRIOLIN; centrosomal protein 110kDa; CEP1; FAN

Storage/Stability: Store at -20°C/1 year

Form of Antibody: Rabbit IgG in phosphate buffered saline (without Mg^{2+} and Ca^{2+}), pH 7.4, 150mM NaCl, 0.02% sodium azide and 50% glycerol.

Immunogen: The antiserum was produced against synthesized peptide derived from internal of human CEP110.

Purification: The antibody was affinity-purified from rabbit antiserum by affinity-chromatography using epitope-specific immunogen.

Specificity: CEP110 antibody detects endogenous levels of total CEP110 protein.

Reactivity: Human (Identities = 100%, Positives = 100%)

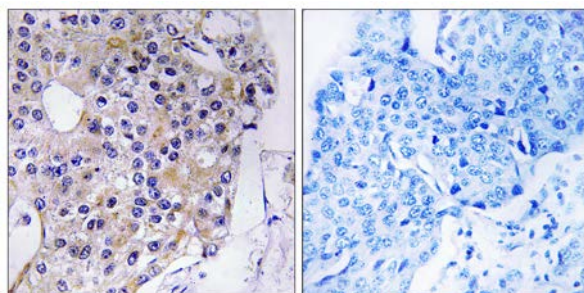
Applications: IHC: 1:50~1:100 ELISA: 1:40000

References:

Martin J., Nature 432:988-994(2004).

Chen Z., Dev. Cell 3:339-350(2002).

Andersen J.S., Nature 426:570-574(2003).



Peptide - +

Immunohistochemistry analysis of paraffin-embedded human breast carcinoma tissue using CEP110 antibody.

For Research Use Only