



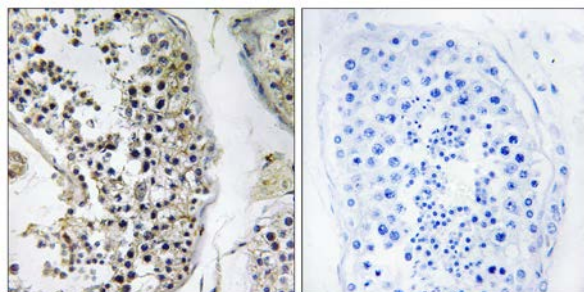
CEP170 Antibody

E11-15040C**Catalog Number:** E11-15040 C**Concentration:** 1mg/ml**Swiss-Prot No.:** Q5SW79**Other Names:** CE170; centrosomal protein of 170 kDa; CEP170; KARP-1-binding protein 1; KARP1-binding protein 1**Storage/Stability:** Store at -20°C/1 year**Form of Antibody:** Rabbit IgG in phosphate buffered saline (without Mg²⁺ and Ca²⁺), pH 7.4, 150mM NaCl, 0.02% sodium azide and 50% glycerol.**Immunogen:** The antiserum was produced against synthesized peptide derived from internal of human CEP170.**Purification:** The antibody was affinity-purified from rabbit antiserum by affinity-chromatography using epitope-specific immunogen.**Specificity:** CEP170 antibody detects endogenous levels of total CEP170 protein.**Reactivity:** Human (Identities = 100%, Positives = 100%)**Applications:** WB: 1:500~1:1000 IHC: 1:50~1:100
ELISA: 1:40000**References:**

Hara Y., Submitted (JAN-1999) to the EMBL/GenBank/DDBJ databases.

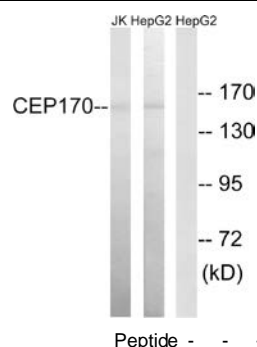
Seki N., DNA Res. 4:345-349(1997).

Gregory S.G., Nature 441:315-321(2006).



Peptide - +

Immunohistochemistry analysis of paraffin-embedded human testis tissue, using CEP170 antibody.



Western blot analysis of extracts from Jurkat cells and HepG2 cells, using CEP170 antibody.