



CEP41 Antibody

E11-15042C

Catalog Number: E11-15042 C

Concentration: 1mg/ml

Swiss-Prot No.: Q9BYV8

Other Names: centrosomal protein of 41 kDa; CEP41; cep41 protein; testis-specific gene A14 protein

Storage/Stability: Store at -20°C/1 year

Form of Antibody: Rabbit IgG in phosphate buffered saline (without Mg^{2+} and Ca^{2+}), pH 7.4, 150mM NaCl, 0.02% sodium azide and 50% glycerol.

Immunogen: The antiserum was produced against synthesized peptide derived from internal of human CEP41.

Purification: The antibody was affinity-purified from rabbit antiserum by affinity-chromatography using epitope-specific immunogen.

Specificity: CEP41 antibody detects endogenous levels of total CEP41 protein.

Reactivity: Human (Identities = 100%, Positives = 100%)

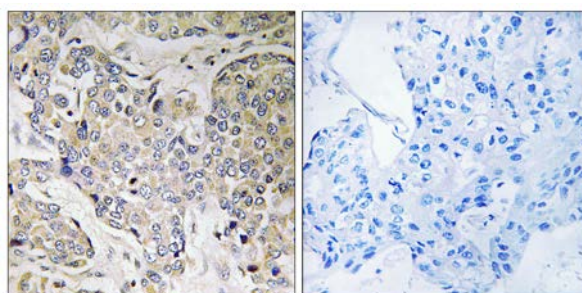
Applications: IHC: 1:50~1:100 ELISA: 1:40000

References:

Yamada T., Gene 288:57-63(2002).

Ota T., Nat. Genet. 36:40-45(2004).

Andersen J.S., Nature 426:570-574(2003).



Peptide - +

Immunohistochemistry analysis of paraffin-embedded human breast carcinoma tissue using CEP41 antibody.

For Research Use Only