



CLIC4 Antibody

E11-15090C

Catalog Number: E11-15090 C

Concentration: 1mg/ml

Swiss-Prot No.: Q9Y696

Other Names: chloride intracellular channel 4 (mitochondrial); D0Jmb3; mc3s5; mtCLIC; TU-74

Storage/Stability: Store at -20°C/1 year

Form of Antibody: Rabbit IgG in phosphate buffered saline (without Mg^{2+} and Ca^{2+}), pH 7.4, 150mM NaCl, 0.02% sodium azide and 50% glycerol.

Immunogen: The antiserum was produced against synthesized peptide derived from N-terminal of human CLIC4.

Purification: The antibody was affinity-purified from

rabbit antiserum by affinity-chromatography using epitope-specific immunogen.

Specificity: CLIC4 antibody detects endogenous levels of total CLIC4 protein.

Reactivity: Human (Identities = 100%, Positives = 100%);

Mouse (Identities = 100%, Positives = 100%);

Rat (Identities = 100%, Positives = 100%)

Applications: WB: 1:500~1:1000 IHC: 1:50~1:100

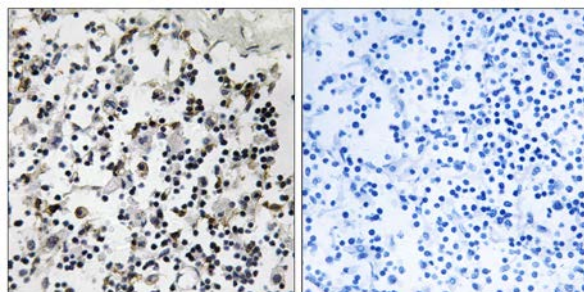
ELISA: 1:40000

References:

Wiemann S., Genome Res. 11:422-435(2001).

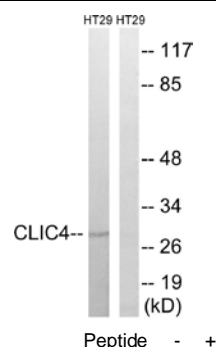
Edwards J.C.; Am. J. Physiol. 276:F398-F408(1999).

Chuang J.Z., J. Neurosci. 19:2919-2928(1999).



Peptide - +

Immunohistochemistry analysis of paraffin-embedded human lymph node tissue using CLIC4 antibody.



Western blot analysis of extracts from HT-29 cells, using CLIC4 antibody.

For Research Use Only