



## CKLF3 Antibody

E11-15133C

**Catalog Number:** E11-15133 C

**Concentration:** 1mg/ml

**Swiss-Prot No.:** Q96MX0

**Other Names:** CKLF-like MARVEL transmembrane domain-containing protein 3; Chemokine-like factor superfamily member 3; CMTM3; CKLFSF3

**Storage/Stability:** Store at -20°C/1 year

**Form of Antibody:** Rabbit IgG in phosphate buffered saline (without  $Mg^{2+}$  and  $Ca^{2+}$ ), pH 7.4, 150mM NaCl, 0.02% sodium azide and 50% glycerol.

**Immunogen:** The antiserum was produced against synthesized peptide derived from N-terminal of human CKLF3.

**Purification:** The antibody was affinity-purified from rabbit antiserum by affinity-chromatography using epitope-specific immunogen.

**Specificity:** CKLF3 antibody detects endogenous levels of total CKLF3 protein.

**Reactivity:** Human

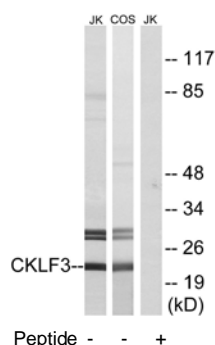
**Applications:** WB: 1:500~1:1000    ELISA: 1:5000

**References:**

Han W., Genomics 81:609-617(2003).

Liu Y., Submitted (OCT-2002) to the EMBL/GenBank/DDBJ databases.

Ota T., Nat. Genet. 36:40-45(2004).



**For Research Use Only**