



C1QBP Antibody

E11-15217C

Catalog Number: E11-15217 C

Concentration: 1mg/ml

Swiss-Prot No.: Q07021

Other Names: C1q globular domain-binding protein; complement component 1, q subcomponent binding protein; Complement component 1, Q subcomponent binding protein, mitochondrial GC1QBP; gC1Q-R; GC1q-R protein; gC1qR; glycoprotein gC1qBP; HABP1; hyaluronan-binding protein 1; MA32; p32; p33; SF2P32; splicing factor SF2-associated protein

Storage/Stability: Store at -20°C/1 year

Form of Antibody: Rabbit IgG in phosphate buffered saline (without Mg^{2+} and Ca^{2+}), pH 7.4, 150mM NaCl, 0.02% sodium azide and 50% glycerol.

Immunogen: The antiserum was produced against synthesized peptide derived from internal of human

C1QBP.

Purification: The antibody was affinity-purified from rabbit antiserum by affinity-chromatography using epitope-specific immunogen.

Specificity: C1QBP antibody detects endogenous levels of total C1QBP protein.

Reactivity: Human (Identities = 100%, Positives = 100%);
Mouse (Identities = 92%, Positives = 100%);
Rat (Identities = 92%, Positives = 100%)

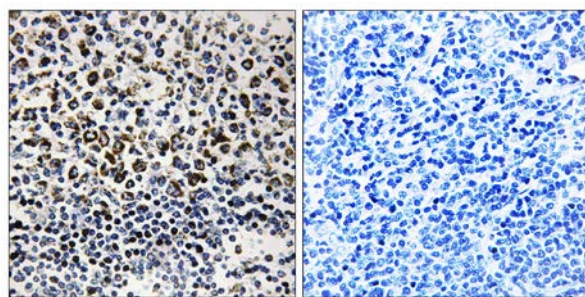
Applications: WB: 1:500~1:1000 IHC: 1:50~1:100
ELISA: 1:40000

References:

Honore B., Gene 134:283-287(1993).

Ghebrehwet B., J. Exp. Med. 179:1809-1821(1994).

Tye A.J., J. Biol. Chem. 276:17069-17075(2001).

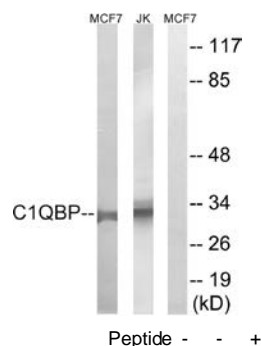


Peptide

-

+

Immunohistochemistry analysis of paraffin-embedded human tonsil tissue, using C1QBP antibody.



C1QBP--

Peptide - - +

Western blot analysis of extracts from Jurkat cells and HUVEC cells, using C1QBP antibody.

For Research Use Only