



DOCK1 Antibody

E11-15315C

Catalog Number: E11-15315 C

Concentration: 1mg/ml

Swiss-Prot No.: Q14185

Other Names: 180 kDa protein downstream of CRK; dedicator of cytokinesis protein 1; DOC1; DOCK180

Storage/Stability: Store at -20°C/1 year

Form of Antibody: Rabbit IgG in phosphate buffered saline (without Mg²⁺ and Ca²⁺), pH 7.4, 150mM NaCl, 0.02% sodium azide and 50% glycerol.

Immunogen: The antiserum was produced against synthesized peptide derived from internal of human DOCK1.

Purification: The antibody was affinity-purified from rabbit antiserum by affinity-chromatography using epitope-specific immunogen.

Specificity: DOCK1 antibody detects endogenous levels of total DOCK1 protein.

Reactivity: Human (Identities = 100%, Positives = 100%);
Mouse (Identities = 85%, Positives = 92%)

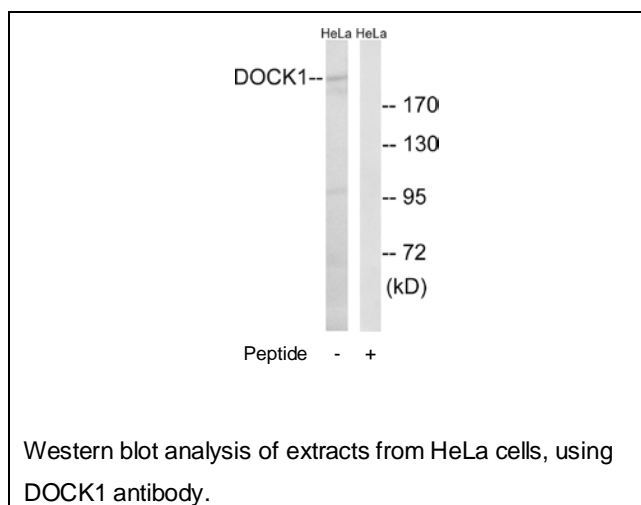
Applications: WB: 1:500~1:1000 ELISA: 1:40000

References:

Hasegawa H., Mol. Cell. Biol. 16:1770-1776(1996).

Deloukas P., Nature 429:375-381(2004).

Matsuda M., J. Biol. Chem. 271:14468-14472(1996).



For Research Use Only