



## POLR1B Antibody

**E11-15462C****Catalog Number:** E11-15462C**Concentration:** 1mg/ml**Swiss-Prot No.:** Q9H9Y6**Other Names:** DNA-directed RNA polymerase I 135 kDa polypeptide; DNA-directed RNA polymerase I 135kDa polypeptide; DNA-directed RNA polymerase I subunit RPA2; FLJ10816; FLJ21921; MGC131780; POLR1B; polymerase (RNA) I polypeptide B, 128kDa; RNA polymerase I subunit 2; RPA135; RPA2; Rpo1-2**Storage/Stability:** Store at -20 °C/1 year**Form of Antibody:** Rabbit IgG in phosphate buffered saline (without Mg<sup>2+</sup> and Ca<sup>2+</sup>), pH 7.4, 150mM NaCl, 0.02% sodium azide and 50% glycerol.**Immunogen:** The antiserum was produced against

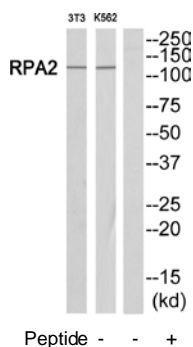
synthesized peptide derived from C-terminal of human POLR1B.

**Purification:** The antibody was affinity-purified from rabbit antiserum by affinity-chromatography using epitope-specific immunogen.**Specificity:** POLR1B antibody detects endogenous levels of total POLR1Bprotein.**Reactivity:** Human; Mouse; Rat**Applications:** WB: 1:500~1:1000 ELISA: 1:40000**References:**

Ota T., Nat. Genet. 36:40-45(2004).

Hillier L.W., Nature 434:724-731(2005).

Miller G., EMBO J. 20:1373-1382(2001).



Western blot analysis of extracts from Jurkat/NIH-3T3 cells, using POLR1B antibody.

**For Research Use Only**