



RPC5 Antibody

E11-15478C

Catalog Number: E11-15478 C

Concentration: 1mg/ml

Swiss-Prot No.: Q9NVU0

Other Names: DNA-directed RNA polymerase III subunit RPC5, RNA polymerase III subunit C5; DNA-directed RNA polymerase III 80 kDa polypeptide

Storage/Stability: Store at -20°C/1 year

Form of Antibody: Rabbit IgG in phosphate buffered saline (without Mg²⁺ and Ca²⁺), pH 7.4, 150mM NaCl, 0.02% sodium azide and 50% glycerol.

Immunogen: The antiserum was produced against synthesized peptide derived from internal of human RPC5.

Purification: The antibody was affinity-purified from

rabbit antiserum by affinity-chromatography using epitope-specific immunogen.

Specificity: RPC5 antibody detects endogenous levels of total RPC5 protein.

Reactivity: Human (Identities = 100%, Positives = 100%);
Mouse (Identities = 92%, Positives = 100%)

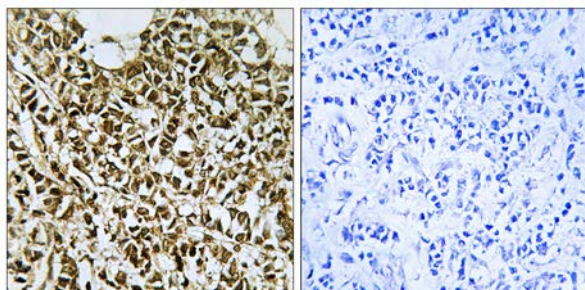
Applications: IHC: 1:50~1:100 IF: 1:100~1:500
ELISA: 1:40000

References:

Hu P., Mol. Cell. Biol. 22:8044-8055(2002).

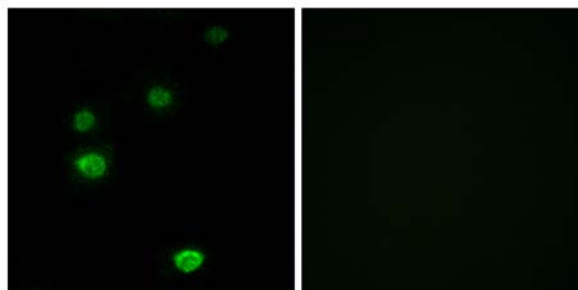
Nagase T., DNA Res. 7:143-150(2000).

The MGC Project Team; Genome Res. 14:2121-2127(2004).



Peptide - +

Immunohistochemistry analysis of paraffin-embedded human breast carcinoma tissue using RPC5 antibody.



Peptide - +

Immunofluorescence analysis of LOVO cells, using RPC5 antibody.

For Research Use Only