



MAN1B1 Antibody

E11-15636C**Catalog Number:** E11-15636C**Concentration:** 1mg/ml, 100ug/100uL**Swiss-Prot No.:** Q9UKM7**Other Names:** Endoplasmic reticulum

mannosyl-oligosaccharide 1, 2-alpha-mannosidase,

EC=3.2.1.113, ER alpha-1, 2-mannosidase, ER

mannosidase 1, ERMan1,

Man9GlcNAc2-specific-processing alpha-mannosidase,

Mannosidase alpha class 1B member 1

Storage/Stability: Store at -20°C/1 year**Form of Antibody:** Rabbit IgG in phosphate buffered saline (without Mg^{2+} and Ca^{2+}), pH 7.4, 150mM NaCl, 0.02% sodium azide and 50% glycerol.**Immunogen:** The antiserum was produced against synthesized peptide derived from internal of human MAN1B1.**Purification:** The antibody was affinity-purified from

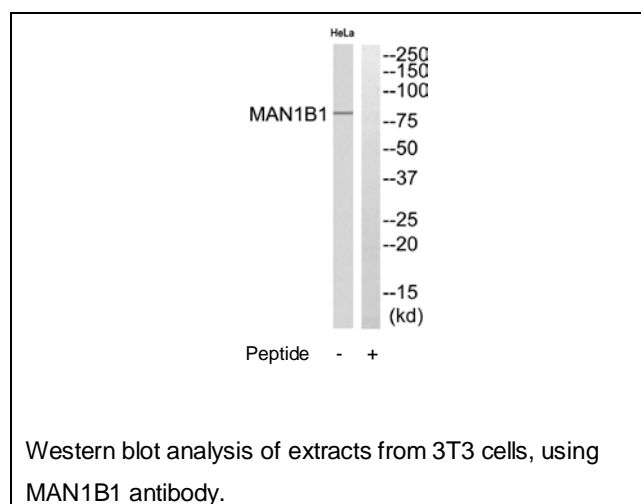
rabbit antiserum by affinity-chromatography using epitope-specific immunogen.

Specificity: MAN1B1 antibody detects endogenous levels of total MAN1B1 protein.**Reactivity:** Human**Applications:** WB: 1:500~1:1000 ELISA: 1:1000**References:**

Tremblay L.O., Glycobiology 9:1073-1078(1999) [PubMed: 10521544].

Gonzalez D.S., J. Biol. Chem. 274:21375-21386(1999) [PubMed: 10409699].

Clark H.F., Genome Res. 13:2265-2270(2003) [PubMed: 12975309].

**For Research Use Only**