



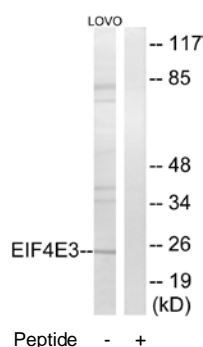
## EIF4E3 Antibody

**E11-15723C****Catalog Number:** E11-15723C**Concentration:** 1mg/ml, 100ug/100uL**Swiss-Prot No.:** Q8N5X7**Other Names:** Eukaryotic translation initiation factor 4E type 3; eIF-4E type 3; eIF4E type 3; eIF4E-3; eIF-4E3; EIF4E3**Storage/Stability:** Store at -20°C/1 year**Form of Antibody:** Rabbit IgG in phosphate buffered saline (without  $Mg^{2+}$  and  $Ca^{2+}$ ), pH 7.4, 150mM NaCl, 0.02% sodium azide and 50% glycerol.**Immunogen:** The antiserum was produced against synthesized peptide derived from internal of human

EIF4E3.

**Purification:** The antibody was affinity-purified from rabbit antiserum by affinity-chromatography using epitope-specific immunogen.**Specificity:** EIF4E3 antibody detects endogenous levels of total EIF4E3 protein.**Reactivity:** Human, Mouse, Rat**Applications:** WB: 1:500~1:1000 ELISA: 1:10000**References:**

Muzny D.M., Nature 440:1194-1198(2006). The MGC Project Team; Genome Res. 14:2121-2127(2004).



Western blot analysis of extracts from LOVO cells, using EIF4E3 antibody.

**For Research Use Only**