



FKBPL Antibody

E11-15758C**Catalog Number:** E11-15758C**Concentration:** 1mg/ml, 100ug/100uL**Swiss-Prot No.:** Q9UIM3**Other Names:** DIR1; FK506 binding protein like;

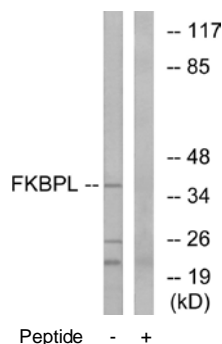
WAF-1/CIP1 stabilizing 39; WISP39

Storage/Stability: Store at -20°C/1 year**Form of Antibody:** Rabbit IgG in phosphate buffered saline (without Mg^{2+} and Ca^{2+}), pH 7.4, 150mM NaCl, 0.02% sodium azide and 50% glycerol.**Immunogen:** The antiserum was produced against synthesized peptide derived from internal of human FKBPL.**Purification:** The antibody was affinity-purified from rabbit antiserum by affinity-chromatography using epitope-specific immunogen.**Specificity:** FKBPL antibody detects endogenous levels of total FKBPL protein.**Reactivity:** Human, Mouse, Rat**Applications:** WB: 1:500~1:1000 ELISA: 1:20000**References:**

Robson T., Radiat. Res. 152:451-461(1999).

Ota T., Nat. Genet. 36:40-45(2004).

Xie T., Genome Res. 13:2621-2636(2003).

**For Research Use Only**