



FOLR1 Antibody

E11-15761C**Catalog Number:** E11-15761C**Concentration:** 1mg/ml, 100ug/100uL**Swiss-Prot No.:** P15328**Other Names:** Folate receptor alpha; FR-alpha; Folate receptor 1; Folate receptor, adult; Adult folate-binding protein; FBP; Ovarian tumor-associated antigen MOv18; KB cells FBP; FOLR**Storage/Stability:** Store at -20°C/1 year**Form of Antibody:** Rabbit IgG in phosphate buffered saline (without Mg²⁺ and Ca²⁺), pH 7.4, 150mM NaCl, 0.02% sodium azide and 50% glycerol.**Immunogen:** The antiserum was produced against synthesized peptide derived from internal of human FOLR1.**Purification:** The antibody was affinity-purified from rabbit antiserum by affinity-chromatography using epitope-specific immunogen.**Specificity:** FOLR1 antibody detects endogenous levels of total FOLR1 protein.**Reactivity:** Human (Identities = 100%, Positives = 100%);

Mouse (Identities = 92%, Positives = 100%);

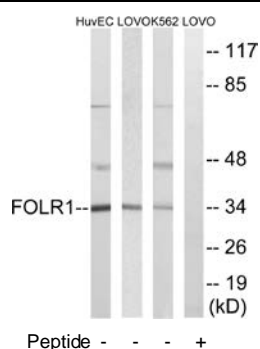
Rat (Identities = 92%, Positives = 100%)

Applications: WB: 1:500~1:1000 ELISA: 1:1000**References:**

Elwood P.C., J. Biol. Chem. 264:14893-14901(1989).

Lacey S.W., J. Clin. Invest. 84:715-720(1989).

Campbell I.G., Cancer Res. 51:5329-5338(1991).



Western blot analysis of extracts from HUVEC cells, LOVO cells and K562 cells, using FOLR1 antibody.

For Research Use Only