



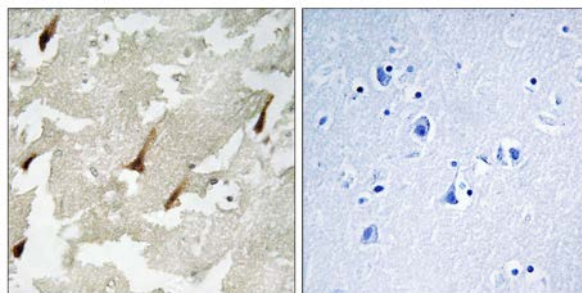
GPRIN2 Antibody

E11-15836C**Catalog Number:** E11-15836C**Concentration:** 1mg/ml, 100ug/100uL**Swiss-Prot No.:** O60269**Other Names:** G protein-regulated inducer of neurite outgrowth 2, GRIN2**Storage/Stability:** Store at -20°C/1 year**Form of Antibody:** Rabbit IgG in phosphate buffered saline (without Mg^{2+} and Ca^{2+}), pH 7.4, 150mM NaCl, 0.02% sodium azide and 50% glycerol.**Immunogen:** The antiserum was produced against synthesized peptide derived from N-terminal of human GPRIN2.**Purification:** The antibody was affinity-purified from rabbit antiserum by affinity-chromatography using epitope-specific immunogen.**Specificity:** GPRIN2 antibody detects endogenous levels of total GPRIN2 protein.**Reactivity:** Human (Identities = 100%, Positives = 100%)**Applications:** IHC: 1:50~1:100 ELISA: 1:40000**References:**

Nagase T., DNA Res. 5:31-39(1998).

The MGC Project Team; Genome Res. 14:2121-2127(2004).

Chen L.T., J. Biol. Chem. 274:26931-26938(1999).



Peptide - +

Immunohistochemistry analysis of paraffin-embedded human brain tissue using GPRIN2 antibody.

For Research Use Only