



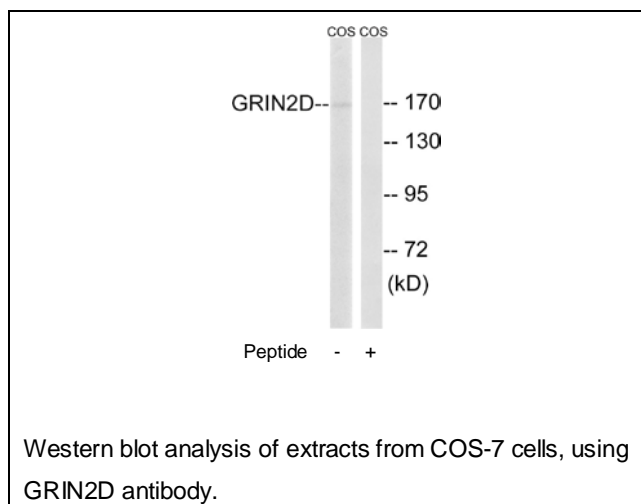
GRIN2D Antibody

E11-15922C**Catalog Number:** E11-15922C**Concentration:** 1mg/ml, 100ug/100uL**Swiss-Prot No.:** O15399**Other Names:** EB11; estrogen receptor binding CpG island; glutamate [NMDA] receptor epsilon 4; glutamate receptor, ionotropic, N-methyl D-aspartate 2D; GRIN2D; N-methyl D-aspartate receptor 2D; NMDE4; NR2D**Storage/Stability:** Store at -20°C/1 year**Form of Antibody:** Rabbit IgG in phosphate buffered saline (without Mg^{2+} and Ca^{2+}), pH 7.4, 150mM NaCl, 0.02% sodium azide and 50% glycerol.**Immunogen:** The antiserum was produced against synthesized peptide derived from internal of human GRIN2D.**Purification:** The antibody was affinity-purified from rabbit antiserum by affinity-chromatography using epitope-specific immunogen.**Specificity:** GRIN2D antibody detects endogenous levels of total GRIN2D protein.**Reactivity:** Human (Identities = 100%, Positives = 100%);
Mouse (Identities = 100%, Positives = 100%);
Rat (Identities = 100%, Positives = 100%)**Applications:** WB: 1:500~1:1000 ELISA: 1:40000**References:**

Hess S.D., J. Neurochem. 70:1269-1279(1998).

Grimwood J., Nature 428:529-535(2004).

Sjoeblom T., Science 314:268-274(2006).

**For Research Use Only**