



GIDRP88 Antibody

E11-15980C

Catalog Number: E11-15980C

Concentration: 1mg/ml, 100ug/100uL

Swiss-Prot No.: Q7Z5L2

Other Names: GIDRP; GIDRP86; growth inhibition and differentiation-related 88; mitochondrial space protein 32.1; PSORT

Storage/Stability: Store at -20°C/1 year

Form of Antibody: Rabbit IgG in phosphate buffered saline (without Mg^{2+} and Ca^{2+}), pH 7.4, 150mM NaCl, 0.02% sodium azide and 50% glycerol.

Immunogen: The antiserum was produced against synthesized peptide derived from internal of human GIDRP88.

Purification: The antibody was affinity-purified from

rabbit antiserum by affinity-chromatography using epitope-specific immunogen.

Specificity: GIDRP88 antibody detects endogenous levels of total GIDRP88 protein.

Reactivity: Human, Mouse

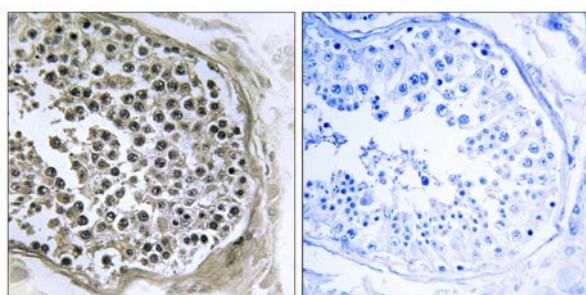
Applications: WB: 1:500~1:1000 IHC: 1:50~1:100
ELISA: 1:40000

References:

Yan J., Submitted (JUN-2002) to the EMBL/GenBank/DDBJ databases.

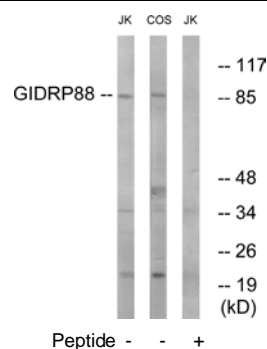
Deloukas P., Nature 429:375-381(2004).

The MGC Project Team; Genome Res. 14:2121-2127(2004).



Peptide - +

Immunohistochemistry analysis of paraffin-embedded human testis tissue using GIDRP88 antibody.



Western blot analysis of extracts from Jurkat cells and COS cells, using GIDRP88 antibody.

For Research Use Only