



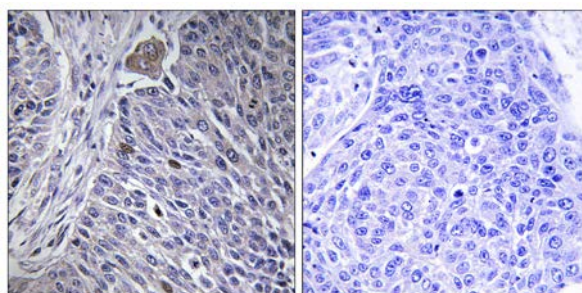
HNRPDL Antibody

E11-16111C**Catalog Number:** E11-16111C**Concentration:** 1mg/ml, 100ug/100uL**Swiss-Prot No.:** O14979**Other Names:** Heterogeneous nuclear ribonucleoprotein D-like, hnRNP-D-like protein; hnHNP-DL; JKT41-binding protein; AU-rich element RNA-binding factor; Protein laAUF1**Storage/Stability:** Store at -20°C/1 year**Form of Antibody:** Rabbit IgG in phosphate buffered saline (without Mg^{2+} and Ca^{2+}), pH 7.4, 150mM NaCl, 0.02% sodium azide and 50% glycerol.**Immunogen:** The antiserum was produced against synthesized peptide derived from internal of human HNRPDL.**Purification:** The antibody was affinity-purified from rabbit antiserum by affinity-chromatography using epitope-specific immunogen.**Specificity:** HNRPDL antibody detects endogenous levels of total HNRPDL protein.**Reactivity:** Human (Identities = 100%, Positives = 100%);
Mouse (Identities = 100%, Positives = 100%);
Rat (Identities = 100%, Positives = 100%)**Applications:** IHC: 1:50~1:100 ELISA: 1:1000**References:**

Tsuchiya N., J. Biochem. 123:499-507(1998).

Kamei D., Gene 228:13-22(1999).

Kawamura H., J. Biol. Chem. 277:2732-2739(2002).



Peptide - +

Immunohistochemistry analysis of paraffin-embedded human lung carcinoma tissue using HNRPDL antibody.

For Research Use Only