



SIX5 Antibody

E11-16357C**Catalog Number:** E11-16357C**Concentration:** 1mg/ml, 100ug/100uL**Swiss-Prot No.:** Q8N196**Other Names:** DM locus-associated homeodomain protein; DMAHP; homeobox protein SIX5**Storage/Stability:** Store at -20°C/1 year**Form of Antibody:** Rabbit IgG in phosphate buffered saline (without Mg²⁺ and Ca²⁺), pH 7.4, 150mM NaCl, 0.02% sodium azide and 50% glycerol.**Immunogen:** The antiserum was produced against synthesized peptide derived from internal of human SIX5.**Purification:** The antibody was affinity-purified from

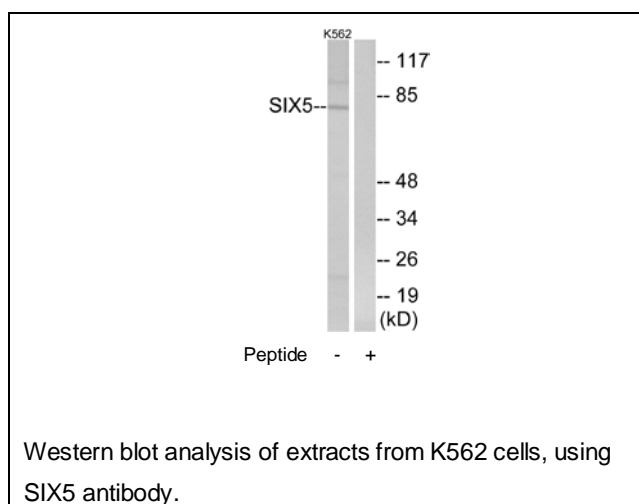
rabbit antiserum by affinity-chromatography using epitope-specific immunogen.

Specificity: SIX5 antibody detects endogenous levels of total SIX5 protein.**Reactivity:** Human, Mouse**Applications:** WB: 1:500~1:1000 ELISA: 1:40000**References:**

Boucher C.A., Hum. Mol. Genet. 4:1919-1925(1995).

Grimwood J., Nature 428:529-535(2004).

The MGC Project Team; Genome Res. 14:2121-2127(2004).

**For Research Use Only**